

svistosi

News

Vistosi News_2

Indice fotografico / <i>Photographic index</i>	5
Indice analitico / <i>Analytic index</i>	7
Designer / <i>Designers</i>	8

Prodotti / Products

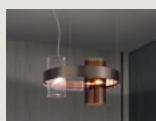
Indice / Index	95
Informazioni / <i>Informations</i>	96
Come leggere il catalogo / <i>How to read the catalog</i>	96
Legenda / <i>Key</i>	98

Materiali / Materials

Colori vetro / <i>Glass colors</i>	98
Finiture vetro / <i>Glass finishes</i>	98
Finiture delle parti metalliche / <i>Finishes of metal parts</i>	99
Altri materiali / <i>Other materials</i>	99

Versioni LED / LED versions

100



Armonia

12



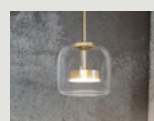
Ecos

16



Incanto

22



Jube

28



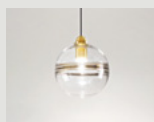
Medea

38



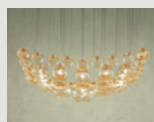
Neochic R

42



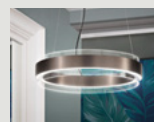
Oro

46



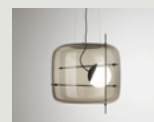
Oto

50



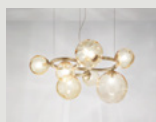
Phoenix

56



Plot

62



Puppet Ring

66



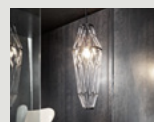
Riflesso

72



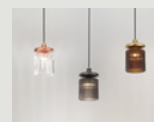
Scintilla

78



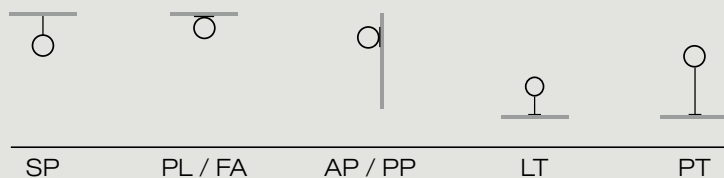
Starnet

82



Tread

86



Armonia	12		14	
Ecos	16	20		
Incanto	22	24		
Jube	28		30	32
Medea	38			
Neochic R	42	44	44	
Oro	46			
Oto	50			
Phoenix	56			
Plot	62			
Puppet Ring	66		70	
Riflesso	72			75
Scintilla	78			
Starnet	82			
Tread	86		90	88

Designers

Francesco Lucchese	ARMONIA
Renato Toso, Noti Massari & Associati	ECOS
Pio e Tito Toso	INCANTO
Favaretto & Partners	JUBE
Oriano Favaretto	MEDEA
Chiaramonte & Marin	NEOCHIC R
Vistosi	ORO
Pio e Tito Toso	OTO
Andrea Lazzari	PHOENIX
Chiaramonte & Marin	PLOT
Romani Sacconi Architetti Associati	PUPPET RING
Chiaramonte & Marin	RIFLESSO
Giovanni Barbato	SCINTILLA
Gianni Veneziano E Luciana Di Virgilio Veneziano+Team	STARNET
Chiaramonte & Marin	TREAD





Nuovi oggetti di luce */News light objects*

**Novità che puntano sulla
forza grafica dei progetti, su forme
essenziali e geometriche, su superfici
che si fanno trasparenti e delicate.
Giochi di riflessi su materiali preziosi.
Ecco che dalla collaborazione
di designers di indubbio livello
e Vistosi sono nati nuovi
e meravigliosi oggetti di luce.**

*/ News that focus on the graphic
power of projects, on essential
and geometric shapes, on surfaces
that become transparent and delicate.
Games of reflections on precious
materials. From the collaboration
of designers of undoubted level
and Vistosi new and wonderful
objects of light have been released.*

ARMONIA

design Francesco Lucchese 2019



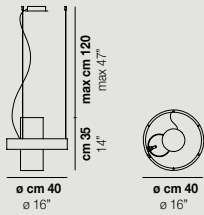
Armonia SP 40



Armonia SP 50



ARMONIA SP 40



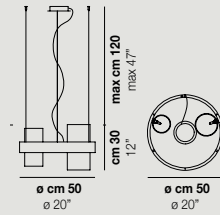
1×60W G9

CE ENEC

USA & CANADA

2×60W G9

ARMONIA SP 50



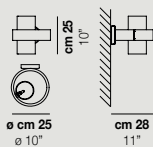
2×60W G9

CE ENEC

USA & CANADA

2×60W G9

ARMONIA AP 25



1×60W G9

CE ENEC

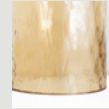
USA & CANADA

2×60W G9

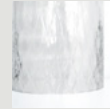
Giochi di circonferenze metalliche attorno a cilindri di vetro quasi a creare infiniti girotondi. Una collezione dai connotati contemporanei con sorgente LED che racchiude preziosi contenuti storici della lavorazione del vetro quali il ballotton, il rigadin dritto e ritorto, il tutto perfezionato da tonalità avvolgenti: cristallo, fumé, ambra e ametista chiaro. Anello esterno con finitura nickel nero satinato e interno ottone satinato o rame.

Games of metal circumferences around glass cylinders as if to create endless rings. A collection with contemporary connotations and a LED source that contains precious historical features: that of glass processings such as the ballotton and the straight and twisted rigadin, all refined by the warm tones of crystal, smoke, amber and light amethyst. Black matt nickel ring with inner matt copper or brass finishes.

Tonalità del vetro / Glass colour tone



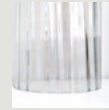
AM/BT



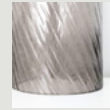
CR/BT



CR/RI



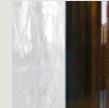
CR/RV



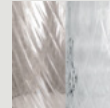
FU/RI



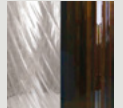
TB/RI



CR/TB

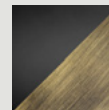


FU/CR

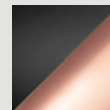


FU/TB

Parti metalliche / Metal parts



N-O



N-O

ECOS

design Pio & Tito Toso 2019



Ecos SP 60C

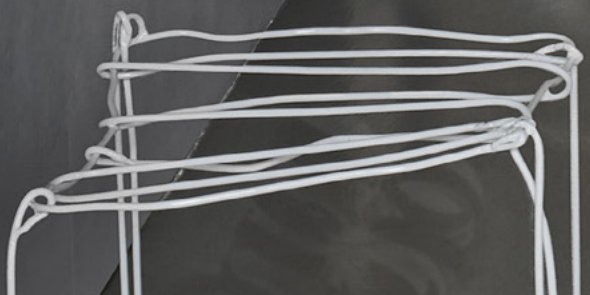
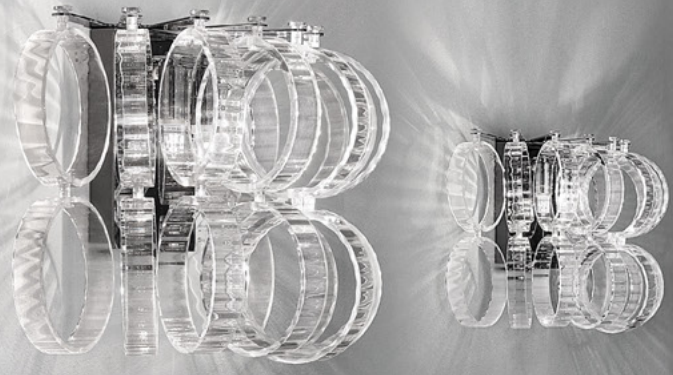


Ecos SP 60C

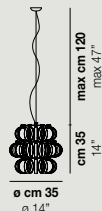


Ecos SP 60C



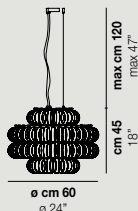


ECOS SP 35



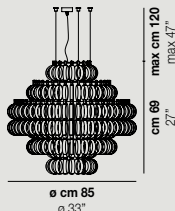
1x77W E27
 CE ENEC CB CCC PS
 USA & CANADA cETLus

ECOS SP 60C



4x77W E27
 CE ENEC CB CCC PS
 USA & CANADA cETLus

ECOS SP 90



5x77W E27
 CE ENEC CB CCC PS
 USA & CANADA cETLus

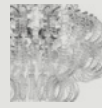
Collezione di lampade componibili con anelli di vetro di diversi colori e textures. È una soluzione d'illuminazione che offre grandissima possibilità di personalizzazione in termini di forme e misure.

A system made with multiple glass rings, available in different colours and textures that offer a high level of personalization in terms of shape and size.

Tonalità del vetro / Glass colour tone

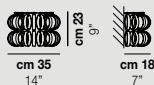


BC/RI



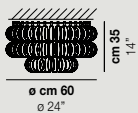
CR/RI

ECOS AP 35



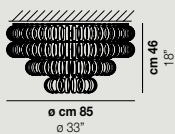
2x60W G9
 CE ENEC CB CCC
 USA & CANADA cETLus

ECOS PL 60A



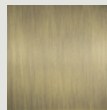
3x77W E27
 CE ENEC CB CCC
 USA & CANADA cETLus

ECOS PL 90



5x77W E27
 CE ENEC CB CCC
 USA & CANADA cETLus

Parti metalliche / Metal parts

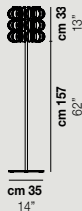


BS



CR

ECOS PT 35



1x77W E27
 CE ENEC CB CCC PS
 USA & CANADA cETLus

INCANTO

design Pio & Tito Toso 2019



Incanto SP

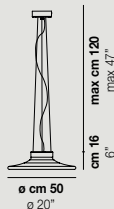








INCANTO SP



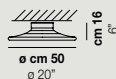
1×15W LED 1155 lm 3.000 K

CE ENEC

USA & CANADA

1×15W LED 1155 lm 3.000 K

INCANTO PL



1×15W LED 1155 lm 3.000 K

CE ENEC

USA & CANADA

1×15W LED 1155 lm 3.000 K

Corolle di luce. La sorgente LED accende il vetro sfumato bianco o cristallo della versione sospensione e plafoniera. I toni neutri e le linee semplici ed eleganti permettono di contestualizzarla in ambienti dagli stili più diversi. Montatura nickel nero satinato.

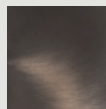
Corollas of light. The LED source lights up the white or crystal shaded glass of the suspension and ceiling lamp versions. Neutral tones and simple, elegant lines make it possible to contextualise it in environments with the most diverse styles. Black matt nickel finish.

Tonalità del vetro / Glass colour tone



BC/SF

Parti metalliche / Metal parts



NNS



JUBE

design Favaretto&Partners 2017



Jube SP 1 G - Jube SP 1 P - Jube SP S









Jube LT G



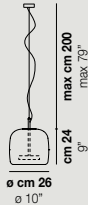




Jube LT P

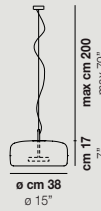


JUBE SP 1 P



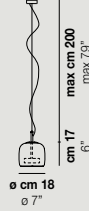
1x19,5W LED 2850 lm 3.000 K
 CE ENEC ERI CB
 USA & CANADA
 1x19,5W LED 2850 lm 3.000 K

JUBE SP 1 G



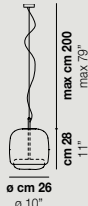
1x19,5W LED 2850 lm 3.000 K
 CE ENEC ERI CB
 USA & CANADA
 1x19,5W LED 2850 lm 3.000 K

JUBE SP S



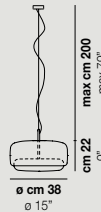
1x8,5W LED 1200 lm 3.000 K
 CE ENEC ERI CB
 USA & CANADA
 1x8,5W LED 1200 lm 3.000 K

JUBE SP P



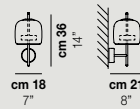
1x19,5W LED 2850 lm 3.000 K
 CE ENEC ERI CB
 USA & CANADA
 1x19,5W LED 2850 lm 3.000 K

JUBE SP G



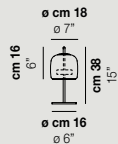
1x19,5W LED 2850 lm 3.000 K
 CE ENEC ERI CB
 USA & CANADA
 1x19,5W LED 2850 lm 3.000 K

JUBE APS



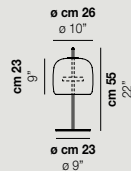
1x12W LED 1550 lm 3.000 K
 CE ERI
 USA & CANADA
 1x12W LED 1550 lm 3.000 K

JUBE LT P



1x12W LED 1550 lm 3.000 K
 CE ERI
 USA & CANADA
 1x12W LED 1550 lm 3.000 K

JUBE LT G



1x12W LED 1550 lm 3.000 K
 CE ERI
 USA & CANADA
 1x12W LED 1550 lm 3.000 K

Fascino retrò. L'aspetto elegante e delicato del vetro soffiato trova in Jube una nuova dimensione. Due vetri accostati, perfettamente assemblati, tanto da sembrare un pezzo unico. Il risultato è una lampada sinuosa, formata da sovrapposizioni e con colori tono su tono che le regalano un prezioso mood vintage. Dopo la sospensione, la collezione si arricchisce di due nuove versioni tavolo, di una nuova dimensione della sospensione e una nuova applique a vetro singolo. Il vetro superiore della sospensione e tavolo è disponibile in quattro colori: fumé, terra bruciata, verde antico, cristallo; finiture metalliche in oro satinato. Sorgente luminosa LED.

Retro charm. The elegant and delicate look of blown glass finds a new dimension in Jube. Two glass units placed side by side, perfectly assembled, so much so that they look like a unique piece. The result is a sinuous lamp, formed by superimpositions and with tone-on-tone colours that give it a precious, vintage mood. After the suspension, the collection is enriched with two new table versions, a new size of suspension and a new applique on a unique glass. Upper glass shades is available in four colours: smoky, burnt earth, antique green, crystal, metal parts finishes are satin gold. LED light source.

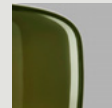
Tonalità del vetro / Glass colour tone



CR

FU

TB



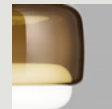
VA



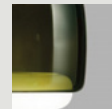
CR/BC



FU/BC

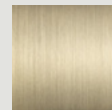


TB/BC



VA/BC

Parti metalliche / Metal parts



OS

MEDEA

design Oriano Favaretto 2019

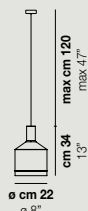


Medea SP 1 - SP 3 - SP 2





MEDEA SP 1



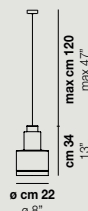
1×15,5W LED 1960 lm 3.000 K

CE ENEC

USA & CANADA

1×15,5W LED 1960 lm 3.000 K

MEDEA SP 2



1×15,5W LED 1960 lm 3.000 K

CE ENEC

USA & CANADA

1×15,5W LED 1960 lm 3.000 K

MEDEA SP 3



1×15,5W LED 1960 lm 3.000 K

CE ENEC

USA & CANADA

1×15,5W LED 1960 lm 3.000 K

Armonia di linee e di contorni. Il vetro e la gamma leggera di colori creano mezze tinte “di passaggio” che lasciano intravedere la loro forma come in un acquerello di vibranti trasparenze. La sorgente LED illumina il piano e nello stesso tempo il vetro, portando a soffitto una parte di luce dalle tinte dolci. Presentate in gruppo o singolarmente manifestano un forte carattere stilistico quasi a divenire sculture.

Harmony of shapes and lines. The glass and the light range of colours create transitional half-tones suggesting their shape as in a watercolour of vibrant transparencies. The LED source illuminates the surface and the glass at the same time, bringing towards the ceiling a part of the soft-colour light. Mounted in clusters or individually, they show a strong stylistic character, and become almost sculptures.

Tonalità del vetro / Glass colour tone



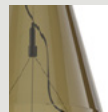
BC/SF



CR/TR

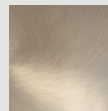


FU/TR



VA/TR

Parti metalliche / Metal parts



AVS

NEOCHIC

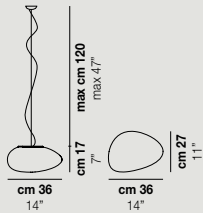
design Chiaramonte & Marin 2013





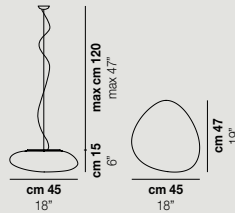


NEOCHIC SP P



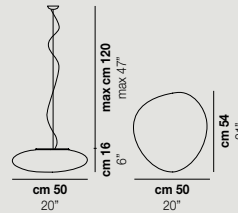
1x77W E27 **I F**
CE **RoHS** **ERC CB** **CCC**
USA & CANADA **cETLus**
 1x60W E26 **I F**

NEOCHIC SP M



2x77W E27 **J G**
CE **RoHS** **ERC CB** **CCC**
USA & CANADA **cETLus**
 2x60W E26 **J G**

NEOCHIC SP G



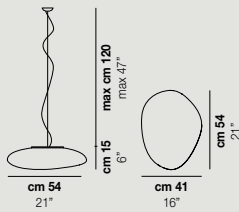
2x77W E27 **J G**
CE **RoHS** **ERC CB** **CCC**
USA & CANADA **cETLus**
 2x60W E26 **J G**

Trae ispirazione dall'effetto di acqua e vento sulla pietra il design di questa collezione di lampade. Le curve morbide e la superficie levigata incontrano il vetro soffiato in un modello di estrema semplicità, adatto a qualsiasi contesto d'arredo.

The design of this collection is inspired by the effect that water and wind make on a stone. The versatility of this lamp, ideal for any kind of decoration, comes from a recognizable and simple form.

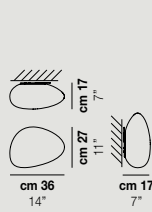
Tonalità del vetro / Glass colour tone

NEOCHIC SP R



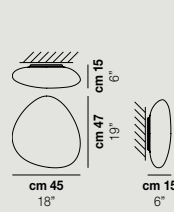
2x77W E27 **J G**
CE **RoHS** **ERC CB** **CCC**
USA & CANADA **cETLus**
 2x60W E26 **J G**

NEOCHIC PP P



1x77W E27 **I F**
CE **RoHS** **ERC CB** **CCC**
USA & CANADA **cETLus**
 1x60W E26 **I F**

NEOCHIC PP M

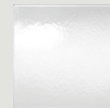


2x77W E27 **J G**
CE **RoHS** **ERC CB** **CCC**
USA & CANADA **cETLus**
 2x60W E26 **J G**



BC/ST

Parti metalliche / Metal parts

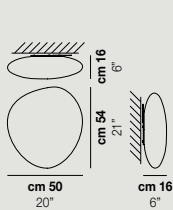


BC



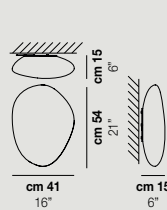
NIB

NEOCHIC PP G



2x77W E27 **J G**
CE **RoHS** **ERC CB** **CCC**
USA & CANADA **cETLus**
 2x60W E26 **J G**

NEOCHIC PP R



2x77W E27 **J G**
CE **RoHS** **ERC CB** **CCC**
USA & CANADA **cETLus**
 2x60W E26 **J G**

LED Europe

- I** 10W-230V-1120lm-3.000K
- F** 12,5W-25V-1650lm-3.000K
- J** 10W-230V-1120lm-3.000K
- G** 19,5W-39V-2850lm-3.000K



LED USA & Canada

- I** 17,5W-120V-1300lm-3.000K
- F** 12,5W-25V-1650lm-3.000K
- J** 17,5W-120V-1300lm-3.000K
- G** 19,5W-39V-2850lm-3.000K



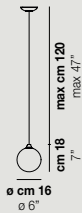
ORO
design Vistosi 2019







ORO SP P



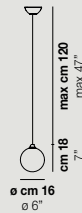
1x60W G9



USA & CANADA

1x60W G9

ORO SP P



1x5W LED 600 lm · 2.700 k



USA & CANADA

1x5W LED 600 lm · 2.700 k

Cielo e terra si incontrano in un orizzonte di colore. Il cristallo trasparente si combina con il nickel nero o l'ottone lucido delle parti metalliche. Questa è Oro, la nuova sospensione firmata Vistosi. L'utilizzo della membrana interna, in diverse colorazioni, distingue le due metà della sfera. La membrana orizzontale assume curvature sempre diverse, rendendo l'intensità di luce e colore sulla superficie sempre differenti. .

Sky and earth join in a horizon of colour. Crystal glass combined with glossy black nickel or brass metal parts. This is Oro, the new suspension by Vistosi. The use of the internal membrane, in different colours, distinguishes the two halves of the sphere. The horizontal membrane takes on ever-changing curves, making the intensity of light and colour on the surface always different.

Tonalità del vetro / Glass colour tone



CR/AA



CR/AM



CR/BC



CR/FU



CR/TB



CR/TR

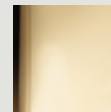


CR/VA

Parti metalliche / Metal parts



NN



OG



OTO

design Pio e Tito Toso 2015



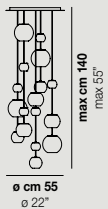
Oto SP SPH





Oto SP SUR

OTO SP R55

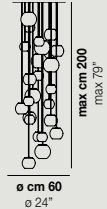


9x60W G9



9x60W G9

OTO SP R60

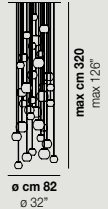


10x60W G9



10x60W G9

OTO SP RC



12x60W G9



12x60W G9

Elementi sferici in vetro soffiato disponibili in 4 misure e due decori, con e senza sorgente luminosa. Il particolare design permette l'installazione verticale di più elementi in vetro ed infinite composizioni a scelta del cliente.

Spherical blown glass elements available in four sizes and two decorations, with and without lighting source. The special design allows the installation of more vertical glass element and infinite custom combinations.

Tonalità del vetro / Glass colour tone



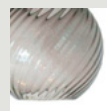
AM/RI



BC/RI

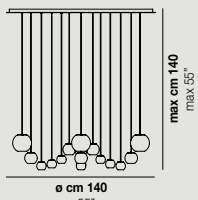


CR/RI



FU/RI

OTO SP CHA

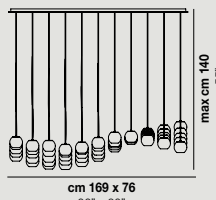


9x60W G9



9x60W G9

OTO SP FC

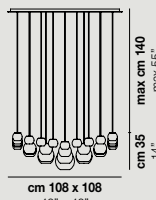


12x60W G9



12x60W G9

OTO SP SUR

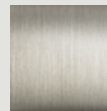


17x60W G9



17x60W G9

Parti metalliche / Metal parts



NI

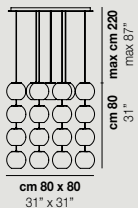


BC



AS

OTO SP CUB

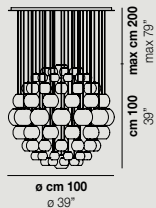


16x60W G9



16x60W G9

OTO SP SPH

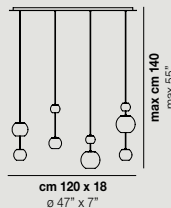


13x60W G9



13x60W G9

OTO SP LIN



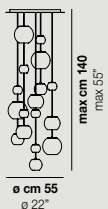
4x60W G9



4x60W G9



OTO SP R55

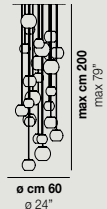


9×60W G9



9×60W G9

OTO SP R60

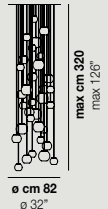


10×60W G9



10×60W G9

OTO SP RC



12×60W G9



12×60W G9

Elementi sferici in vetro soffiato disponibili in 4 misure e due decori, con e senza sorgente luminosa. Il particolare design permette l'installazione verticale di più elementi in vetro ed infinite composizioni a scelta del cliente.

Spherical blown glass elements available in four sizes and two decorations, with and without lighting source. The special design allows the installation of more vertical glass element and infinite custom combinations.

Tonalità del vetro / Glass colour tone



AM/RI

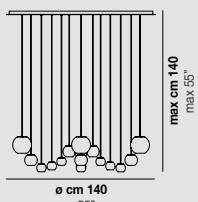
BC/RI

CR/RI



FU/RI

OTO SP CHA

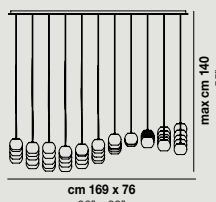


9×60W G9



9×60W G9

OTO SP FC

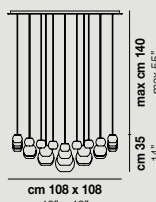


12×60W G9



12×60W G9

OTO SP SUR

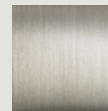


17×60W G9



17×60W G9

Parti metalliche / Metal parts



NI

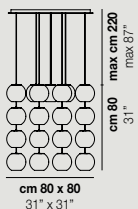


BC



AS

OTO SP CUB

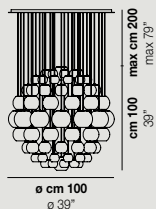


16×60W G9



16×60W G9

OTO SP SPH

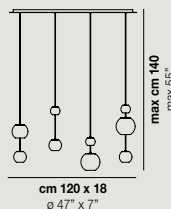


13×60W G9



13×60W G9

OTO SP LIN



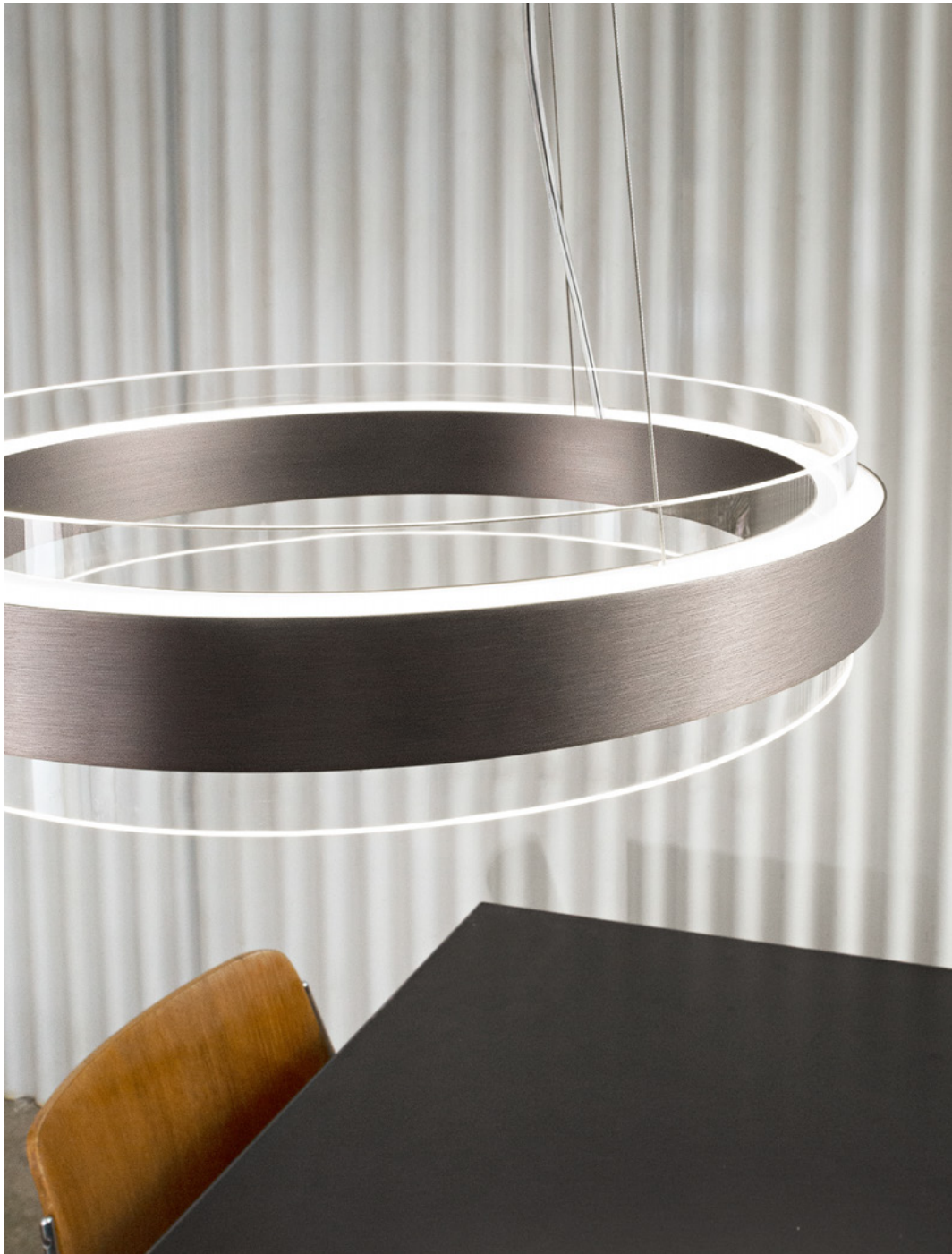
4×60W G9



4×60W G9

PHOENIX

design Andrea Lazzari 2019





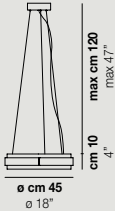


Phoenix SP





PHOENIX SP



1×35W LED 4025 lm 3.000 K



USA & CANADA

1×14,5W LED 4025 lm 3.000 K

Elegante gioco di geometrie ed incastri circolari dalla forte connotazione decorativa, che arreda ed illumina l'ambiente con una personalità decisa ma discreta. La fonte luminosa a LED è molto efficiente e completamente nascosta nella struttura. L'illuminazione diretta definisce la zona di luce sottostante, esaltando la naturale bellezza delle tonalità fumé, ambra e cristallo impreziosite da finiture nickel nero satinato e rame.

Elegant game of geometries and circular joints with a strong decorative connotation, which embellishes and illuminates the room with a strong but discreet personality. The LED light source is very efficient and completely hidden in the structure. Direct lighting defines the area of light below, enhancing the natural beauty of the smoky, amber and crystal tones embellished with matt black nickel and copper finishes.

Tonalità del vetro / Glass colour tone



AM/TR

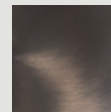


CR/TR

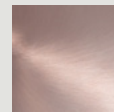


FU/TR

Parti metalliche / Metal parts



NNS



RAV



PLOT

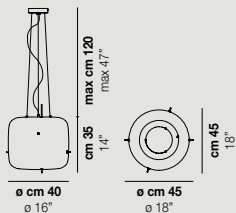
design Chiaramonte & Marin 2019







PLOT SP



1x12,5W LED 1750 lm 3.000 K



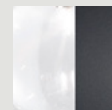
USA & CANADA

1x12,5W LED 1750 lm 3.000 K

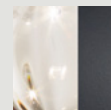
Perfetto dialogo tra differenti materiali e la fonte luminosa sospesa: questa è Plot. Ispirata agli intrecci delle impalcature orientali di bambù, Plot conferisce una sensazione di leggerezza e di sospensione, data dal gioco di equilibri in cui la sorgente luminosa a LED è sostenuta attraverso l'intreccio delle bacchette metalliche. Plot unisce materiali diversi tra loro come il metallo nero e ottone ed il vetro in tonalità cristallo e fumé.

Perfect dialog enter different materials and suspended light source: this is Plot. Inspired by the weaving of oriental bamboo scaffolding, Plot gives a feeling of lightness and suspension, thanks to the play of balances where the light source is supported through the interweaving of the metal rods. Plot combines different materials such as black and brass metal and glass in tones of crystal and smoke.

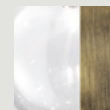
Tonalità del vetro / Glass colour tone



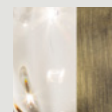
CR/NE



FU/NE

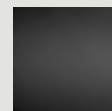


CR/OT



FU/OT

Parti metalliche / Metal parts



NEO

PUPPET RING

design Romani Sacconi Architetti Associati 2019





Puppet Ring SP 9



Puppet Ring SP 7

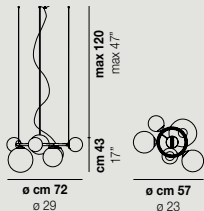


Puppet Ring SP 7



Ruppet Ring AP 2

PUPPET RING SP 5



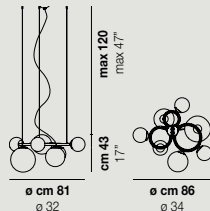
5×60W G9



USA & CANADA

5×60W G9

PUPPET RING SP 7



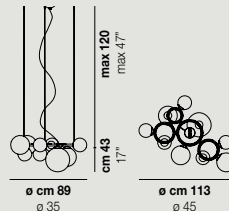
7×60W G9



USA & CANADA

7×60W G9

PUPPET RING SP 9



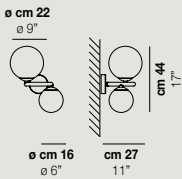
9×60W G9



USA & CANADA

9×60W G9

PUPPET RING AP 2



2×60W G9



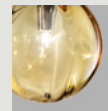
USA & CANADA

2×60W G9

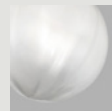
L'elemento distintivo di questo modello della collezione Puppet sono i tre anelli con diametro crescente, che possono essere accostati con sequenze differenti per costituire l'armatura su cui andare ad appoggiare le preziose sfere in vetro di tre dimensioni differenti, che si fondono con la struttura grazie ad una preformatura interna al vetro soffiato. Esteticamente leggero ed elegante, Puppet Ring coniuga in modo etereo vetro cristallo, fumé, ambra e bianco sfumato con finiture oro e nickel nero satinato.

The distinctive feature of this model from the Puppet collection are the three rings with increasing diameter. They can be combined with different sequences to form the framework on which to place the three diameters of the precious glass spheres in three different sizes, which blend with the structure thanks to a preformation inside the blown glass. Aesthetically light and elegant, Puppet Ring ethereally combines crystal, smoke, amber and shaded white glass and gold and black matt nickel finishes.

Tonalità del vetro / Glass colour tone



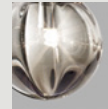
AM/TR



BC/SF

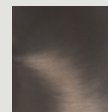


CR/TR

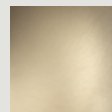


FU/TR

Parti metalliche / Metal parts



NNS



BKS



RIFLESSO

design Chiaramonte & Marin 2019







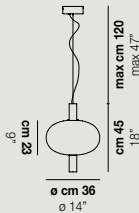


Riflesso LT 3



Riflesso LT 3

RIFLESSO SP 1



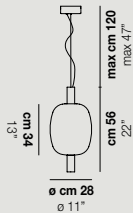
1x12,5W LED 1530 lm 3.000 K

CE ENEC

USA & CANADA

1x12,5W LED 1530 lm 3.000 K

RIFLESSO SP 2



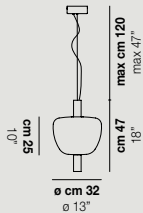
1x12,5W LED 1530 lm 3.000 K

CE ENEC

USA & CANADA

1x12,5W LED 1530 lm 3.000 K

RIFLESSO SP 3



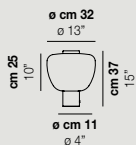
1x12,5W LED 1530 lm 3.000 K

CE ENEC

USA & CANADA

1x12,5W LED 1530 lm 3.000 K

RIFLESSO LT 3



1x10,5W LED 1340 lm 3.000 K

CE ENEC

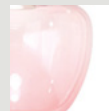
USA & CANADA

1x10,5W LED 1340 lm 3.000 K

La sorgente luminosa LED attraversa una bolla di vetro per rifrangersi su uno specchio in un gioco di continui rimbalzi. Il vetro non è solo diffusore bensì tramite, quasi invisibile, tra la fonte di luce e l'elemento riflettente. La semplicità e la leggerezza del vetro diventano protagoniste in tre diverse forme sinuose arricchite da tonalità cristallo, fumé, ambra e ametista chiaro.

The LED light passes through a glass bubble to refract on a mirror in a game of continuous rebounds. Glass is not only a diffuser, but also an almost invisible intermediary between the light source and the reflecting element. The simplicity and lightness of glass become the main features in three different sinuous shapes enriched by crystal, smoke, amber and light amethyst tones.

Tonalità del vetro / Glass colour tone



AA/TR



AM/TR

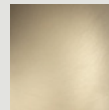


CR/TR

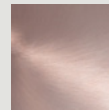


FU/TR

Parti metalliche / Metal parts



BKS



RAV

SCINTILLA

design Giovanni Barbato 2019

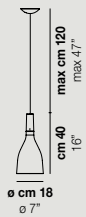






Scintilla SP

SCINTILLA SP



1×6W **LED** 420 lm 3.000 K

CE ENEC

USA & CANADA

1×6W **LED** 420 lm 3.000 K

Scintilla è una forma classica, senza tempo. La sorgente LED accende la silhouette contenuta e sinuosa, creando giochi di luce ed emozione grazie al fondo pieno del suo bicchiere in vetro. Nel suo nome è insita l'idea, la forma della luce che prende vita nelle trasparenze del cristallo e nella tonalità del bianco. Parti metalliche disponibili nei colori rame, bronzo e ottone.

Scintilla is a classic, timeless form.

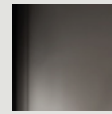
The LED source lights up the sober and sinuous silhouette, creating patterns of light and emotion thanks to the full bottom of its glass cup. In its name lies the idea, the shape of the light that comes to life in the transparencies of the crystal and in the shade of white. Metal parts finishes available in copper, bronze and brass colours.

Tonalità del vetro / Glass colour tone

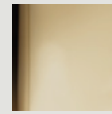


CR/TR

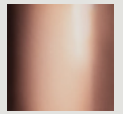
Parti metalliche / Metal parts



BH



OG



RA



STARNET

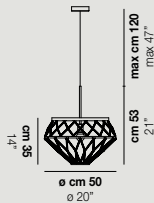
design Gianni Veneziano e Luciana Di Virgilio | Veneziano+Team 2015 - restyling 2019







STARNET SP 3



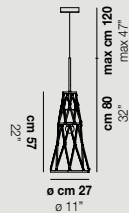
1x77W E27

CE EAC

USA & CANADA

1x60W E26

STARNET SP 4



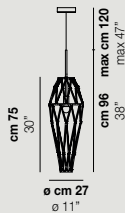
1x77W E27

CE EAC

USA & CANADA

1x60W E26

STARNET SP 5



1x77W E27

CE EAC

USA & CANADA

1x60W E26

Starnet è un prodotto versatile costituito da infinite trame di cristallo che permettono grandi possibilità di personalizzazione. Le due sospensioni della collezione rivisitate con nuove finiture si arricchiscono di tre nuovi modelli in cui sparisce il paralume e il tessuto assume nuove configurazioni. Le finiture metalliche ottone lucido e nero opaco esaltano il vetro cristallo trasparente. Sorgente luminosa a LED.

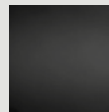
Starnet is a versatile product consisting of infinite crystal textures that allow great possibilities for customization. The two suspensions of the collection, revisited with new finishes, are enriched with three new models, where the lampshade disappears and the fabric takes on new configurations. Brass and black metal parts finishes bring out the crystal glass. LED light source.

Tonalità del vetro / Glass colour tone

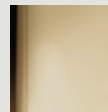


CR

Parti metalliche / Metal parts



NEO



OG



TREAD

design Chiaramonte & Marin 2019







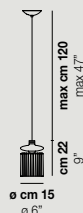








TREAD SP



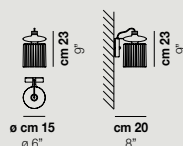
1×8W LED 550 lm 3.000K



USA & CANADA

1×8W LED 550 lm 3.000K

TREAD AP



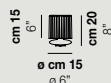
1×8W LED 550 lm 3.000K



USA & CANADA

1×8W LED 550 lm 3.000K

TREAD LT



1×60W E14



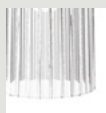
USA & CANADA

1×60W E14

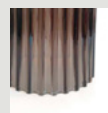
La "tecnicità" dell'elemento metallico unito al diffusore in vetro soffiato conferisce a Tread uno stile "industriale". Un oggetto che ricorda le apparecchiature elettriche vintage per la sua forma particolare, in cui il dissipatore alettato, unito al vetro soffiato, diviene elemento caratterizzante. Finiture in bronzo, oro e rame satinato. Tread crea un'atmosfera all'avanguardia e di stile.

The "technicity" of the metal element combined with the blown glass diffuser gives Tread an "industrial" style. An object reminiscent of vintage electrical equipment for its particular shape, in which the finned heat sink, combined with blown glass, becomes a distinctive element. Copper, bronze and matt gold finishes. Tread creates an avant-garde and stylish atmosphere.

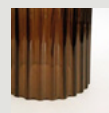
Tonalità del vetro / Glass colour tone



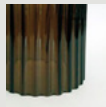
CR/TR



FU/TR

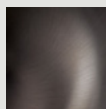


TB/TR

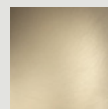


VA/TR

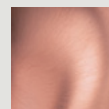
Parti metalliche / Metal parts



BHS



BKS



RAS

Simboli / Symbols description	96
Legenda / Key	97
Materiali / Materials	98
Colori vetro / Glass colors	98
Finiture vetro / Glass finishes	98
Finiture delle parti metalliche / Finishes of metal parts	99
Altri materiali / Other materials	99
Versioni LED / LED versions	100

Simboli / Symbols description



Certificato di "Conformità Europea", indica che il prodotto è conforme alle norme di sicurezza Europee.
"European Conformity" marking, which indicates that the product complies with the European safety standards.
Das Zertifikat von "Europäischer Konformität" zeigt an, dass das Produkt den europäischen Sicherheitsnormen entspricht.
Ce certificat de "Conformité Européenne" indique que le produit est conforme aux normes européennes de sécurité.
Certificado de "Conformidad Europea", que indica que el producto cumple con las normas de seguridad europeas.



È il massimo delle certificazioni di prodotto vigenti in Europa. Per ottenere questo certificato, il prodotto deve superare i test di sicurezza Europei, ma anche i test specifici richiesti da tutti gli stati membri.
It is the high quality European certification for products. In order to obtain it, the product must pass the European security tests as well as the specific tests required by each Member State.
Es ist die wichtigste geltende Produktzertifizierung in Europa. Damit dieses Zertifikat ihm zugestanden wird, muss das Produkt europäische Sicherheitstests, und auch die spezifischen Tests bestehen, die alle Mitgliedstaaten erfordern.
C'est la plus importante certification de produits en vigueur en Europe. Pour qu'on lui accorde ce certificat, le produit doit passer des tests de sécurité européens, mais aussi les tests spécifiques requis par tous les États membres.
Es la más alta certificación de producto vigente en Europa. Para obtener este certificado el producto debe superar tanto las pruebas de seguridad europeas como aquellas específicas requeridas por todos los miembros de la CE.



Certificato di conformità del prodotto alle normative di sicurezza elettro-technica della Federazione Russa.
Certification indicating products that conform to the electro-technical safety regulations of the Russian Federation.
Dieses Zeichen steht für „Staatlichen Standard“ und stellt die Bescheinigung der Konformität eines Produkts mit den technischen Standards der Russischen Föderation dar.
Cet acronyme signifie « Standard d'État » et indique l'attestation de conformité d'un produit aux normes techniques de la Fédération de Russie.
Indica que el producto cumple con las normas técnicas nacionales de la Federación Rusa.



Certificato di conformità del prodotto alle normative di sicurezza elettro-technica della Cina.
Certification indicating products that conform to the electro-technical safety regulations of China.
Konformitätszertifikat des Produkts mit den elektrisch-technischen Sicherheitsnormen von China.
Certificat de conformité du produit aux normes de sécurité électrotechnique de la Chine.
Certificado de conformidad del producto con las normas de seguridad electrotécnica de China.



Certificato internazionale di sicurezza elettro-technica di prodotto, riconosciuto da oltre 50 Paesi.
International Certification of electro-technical product safety, recognized by over 50 countries.
Internationales Zertifikat für elektrisch-technische Produktsicherheit, anerkannt in über 50 Ländern.
Certificat international de sécurité des produits électrotechniques, reconnu par plus de 50 pays.
Certificado internacional de seguridad electrotécnica de producto, reconocido por más de 50 países.



Certificato di conformità del prodotto alle normative di sicurezza elettro-technica del Giappone. Disponibile solo su richiesta e fornito da Doi&Co. Luminabella Div.
Certification indicating products that conform to Japan's electro-technical safety regulations. Available only on request and supplied by Doi & Co. Luminabella Div.
Zertifikat der Konformität des Produkts mit den elektrisch-technischen Sicherheitsnormen von Japan. Erhältlich nur auf Anfrage, geliefert von Doi&Co. Luminabella Div.
Certificat de conformité du produit aux normes de sécurité électrotechnique du Japon. Disponible uniquement sur demande et fourni par Doi&Co. Luminabella Div.
Certificado de conformidad del producto con las normas de seguridad electrotécnica de Japón. Disponible solo bajo demanda y suministrado por Doi&Co. Luminabella Div.



Certificato di conformità del prodotto alle normative di sicurezza elettro-technica degli Stati Uniti e del Canada.
Disponibile per i mercati di riferimento.
Certification of product conformity to the electro-technical safety regulations of the United States and Canada.
Available for the specific markets.
Zertifikat der Konformität des Produkts mit den elektrisch-technischen Sicherheitsnormen der USA und Kanada. Erhältlich für die entsprechenden Länder.
Certificat de conformité du produit aux normes de sécurité électrotechnique des États-Unis et du Canada. Disponible pour les marchés de référence.
Certificado de conformidad del producto con las normas de seguridad electrotécnica de los Estados Unidos y de Canadá. Disponible para los mercados de referencia.

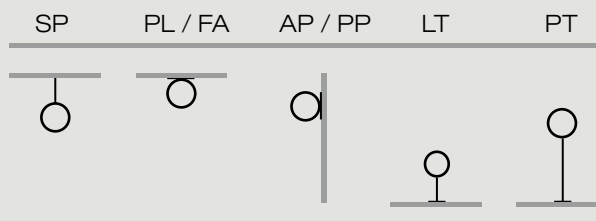


Simbolo che indica che l'apparecchio è conforme alle linee guida dell'Americans with Disabilities Act (ADA).
Symbol indicating that the device complies with the guidelines of the Americans with Disabilities Act (ADA).
Symbol das angibt, dass das Gerät den Richtlinien des „Americans with Disabilities Act“ (ADA) entspricht.
Symbole indiquant que l'appareil est conforme aux directives de l'Americans with Disabilities Act (ADA).
Símbolo que indica que el aparato es conforme con las pautas del "Americans with Disabilities Act" (ADA).

Legenda / Key

Tipologie / Types

SP	Sospensione	<i>Suspension</i>
PL	Plafoniera	<i>Ceiling</i>
AP	Parete	<i>Wall</i>
PP	Parete - Soffitto	<i>Wall - Ceiling</i>
FA	Faretto	<i>Spotlight</i>
LT	Tavolo	<i>Table</i>
PT	Terra	<i>Floor</i>



Legenda codici prodotto / Key of product codes

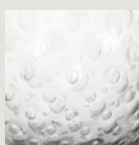
es. ex.	codice prodotto <i>product code</i>	tipologia <i>type</i>	modello <i>model</i>	colore vetro <i>glass color</i>	finitura vetro <i>glass finish</i>	finitura struttura <i>metal part finish</i>	sorgente <i>lamping</i>
1	ASSIBA SP G BC/BT CR E27	sospensione <i>suspension</i>	grande <i>large</i>	bianco <i>white</i>	/ balloton <i>balloton</i>	cromo <i>chrome</i>	E27
2	ASSIBA SP 2 CR/BT CR LED	sospensione <i>suspension</i>	2 vetri <i>2 glasses</i>	cristallo <i>crystal</i>	/ balloton <i>balloton</i>	cromo <i>chrome</i>	LED

Legenda / Key

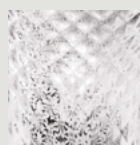
Materiali / Materials

	colori vetro	glass colors	Glasfarben	couleurs verre	colores vidrio
AA	ametista chiara	light amethyst	Amethyst hell	améthyste claire	amatista clara
AD	ambra scura	dark amber	Bernstein dunkel	ambre foncé	ambar oscuro
AM	ambra	amber	Bernstein	ambre	ámbar
AT	ametista	amethyst	Amethyst	améthyste	amatista
BC	bianco	white	weiß	blanc	blanco
CR	cristallo	crystal	Kristall	cristal	cristal
FU	fumè	smoky	Rauchglas	fumée	ahumado
GR	grigio	grey	grau	gris	gris
NE	nero	black	schwarz	noir	negro
SB	sabbia	sand	Sandfarben	sable	arena
SE	seta	silk	Seide	soie	seda
TB	terra bruciata	burned earth	Erdbraun	terre brûlée	tierra quemada
VA	verde antico	old green	Grün	vert ancien	verde antiguo

	finiture vetro	glass finishes	Glasausführungen	finitions verre	acabados vidrio
.. / AG	.. / argento	.. / silver	.. / Silber	.. / argent	.. / plata
.. / BC	.. / bianco	.. / white	.. / weiß	.. / blanc	.. / blanco
.. / BO	.. / "bolle"	.. / "bubbles"	.. / mit Blasen	.. / "bulles"	.. / "burbujas"
.. / BR	.. / bronzo	.. / bronze	.. / Bronze	.. / bronze	.. / bronce
.. / BT	.. / "balloton"	.. / "balloton"	.. / „balloton"	.. / "balloton"	.. / "balloton"
.. / CM	.. / metallizzato	.. / metallized	.. / metallic	.. / métallisé	.. / metalizado
.. / DI	.. / diffusore lucido	.. / glossy diffuser	.. / Difusor glänzend	.. / diffuseur brillant	.. / difusor brillante
.. / FO	.. / foglia oro	.. / gold leaf	.. / Blattgold	.. / feuille d'or	.. / hoja oro
.. / LU	.. / lucido	.. / glossy	.. / glänzend	.. / brillant	.. / brillante
.. / MF	.. / metallizzato sfumato	.. / shaded metallized	.. / metallic getönt	.. / métallisé fumé	.. / metalizado sombreado
.. / MU	.. / "murrina"	.. / "murrina"	.. / „murrina"	.. / "murrina"	.. / "murrina"
.. / NE	.. / nero	.. / black	.. / schwarz	.. / noir	.. / negro
.. / OR	.. / oro	.. / gold	.. / Gold	.. / or	.. / oro
.. / PU	.. / "pulegoso"	.. / "pulegoso"	.. / „pulegoso"	.. / "pulegoso"	.. / "pulegoso"
.. / RA	.. / rame	.. / copper	.. / Kupfer	.. / cuivre	.. / cobre
.. / RI	.. / rigadin	.. / striped glass	.. / gestreift	.. / rigadin	.. / a rayas
.. / RV	.. / rigadin verticale	.. / striped vertical glass	.. / senkrecht gestreift	.. / lignes verticales	.. / a rayas vertical
.. / SF	.. / sfumato	.. / shaded	.. / abgetönt	.. / dégradé	.. / sombreado
.. / ST	.. / satinato	.. / matt	.. / satiniert	.. / satiné	.. / satinado
.. / TR	.. / trasparente	.. / transparent	.. / transparent	.. / transparent	.. / transparente



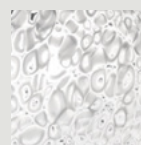
.. / **BO**



.. / **BT**



.. / **PU**



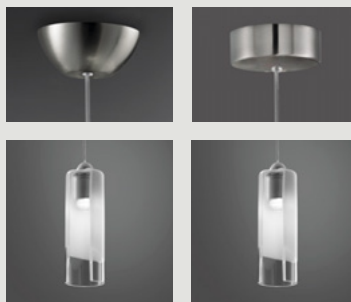
.. / **MU**

	finiture parti metalliche	metal parts finishes	Ausführung Metallteile	finitions parties métalliques	acabados partes metálicas
AB	alluminio bronzo	bronze aluminium	Aluminium Bronze	aluminium bronze	aluminio bronze
AS	acciaio specchiato	mirrored steel	Chrom verspiegelt	acier réfléchissant	acero espejado
AVS	acciaio satinato verniciato	matt steel	Chrom satiniert lackiert	acier satiné laqué	acero satinado pintado
BC	bianco lucido	glossy white	weiß glänzend	blanc brillant	blanco brillante
BD	bianco opaco 2	matt white 2	weiß matt 2	blanc mat 2	blanco mate 2
BH	bronzo lucido	glossy bronze	Bronze glänzend	bronze brillant	bronze brillante
BHS	bronzo satinato	matt bronze	Bronze satiniert	bronze satiné	bronze satinado
BKL	ottone lucido	glossy brass 1	Messing glänzend	laiton brillant	latón brillante
BKS	oro satinato 3	matt gold 3	Gold satiniert 3	or dépoli 3	oro satinado 3
BO	bianco opaco 1	matt white 1	weiß matt 1	blanc mat 1	blanco mate 1
BP	bianco opaco 3	matt white 3	weiß matt 3	blanc mat 3	blanco mate 3
BR	bronzo opaco	matt bronze	Bronze matt	bronze mat	bronze mate
BS	bronzo satinato	matt bronze	Bronze satiniert	bronze satiné	bronze satinado
BV	bronzo lucido	glossy bronze	Bronze glänzend	bronze brillant	bronze brillante
CR	cromo lucido	glossy chrome	Chrom glänzend	chrome brillant	cromo brillante
C-G	cromo - cavo grigio	chrome - grey cable	Chrom - Kabel grau	chrome - câble gris	cromo - cable gris
GR	grigio	grey	grau	gris	gris
MA	marrone	brown	braun	marron	marrón
NE	nero opaco 1	matt black 1	schwarz matt 1	noir mat 1	negro mate 1
NEL	nero lucido	glossy black	schwarz glänzend	noir brillant	negro brillante
NEO	nero opaco 2	matt black 2	schwarz matt 2	noir mat 2	negro mate 2
NI	nickel satinato	satin nickel	Nickel satiniert	nickel satiné	níquel satinado
NIB	nickel - bianco	nickel - white	Nickel - weiß	nickel - blanc	níquel - blanco
NL	nickel lucido	glossy nickel	Nickel glänzend	nickel brillant	níquel brillante
NN	nickel nero	black nickel	Nickel schwarz	nickel noir	níquel negro
NNS	nickel nero satinato	matt black nickel	Nickel schwarz satiniert	nickel noir satiné	níquel negro satinado
NO	nickel opaco	matt nickel	Nickel matt	nickel mat	níquel mate
N-N	nero - cavo nero	black - black cable	schwarz - Kabel schwarz	noir - câble noir	negro - cable negro
N-O	nero - ottone	black - brass	schwarz - Messing	noir - laiton	negro - latón
N-R	nero - rame	black - copper	schwarz - Kupfer	noir - cuivre	negro - cobre
OA	oro rosa satinato	matt pink gold	Gold rosa satiniert	or rose dépoli	oro rosa satinado
OG	ottone lucido 2	glossy brass 2	Messing glänzend 2	laiton brillant 2	latón brillante 2
OP	oro satinato 1	matt gold 1	Gold satiniert 1	or dépoli 1	oro satinado 1
OR	oro lucido	glossy gold	Gold glänzend	or brillant	oro brillante
OS	oro satinato 2	matt gold 2	Gold satiniert 2	or dépoli 2	oro satinado 2
OT	ottone anticato	antique brass	Messing antik	laiton vieilli	latón aspecto antiguo
OTL	ottone	brass	Messing	laiton	latón
OTS	ottone satinato	matt brass	Messing satiniert	laiton satiné	latón satinado
RA	rame lucido	glossy copper	Kupfer glänzend	cuivre brillant	cobre brillante
RAS	rame satinato 1	matt copper 1	Kupfer satiniert 1	cuivre satiné 1	cobre satinado 1
RAV	rame satinato 2	matt copper 2	Kupfer satiniert 2	cuivre satiné 2	cobre satinado 2

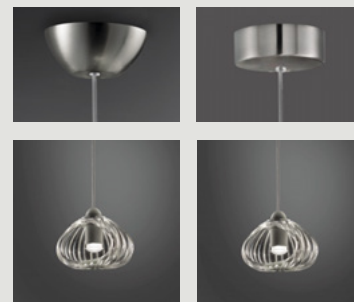
	altre finiture	other materials	Sonstige Ausführungen	autres finitions	otros acabados
LFN	legno frassino nero	black ash wood	Holz Esche schwarz	bois frêne noir	madera fresno negro
LFR	legno frassino naturale	natural ash wood	Holz Esche natur	bois frêne naturel	madera fresno natural
LNO	legno noce naturale	natural walnut wood	Holz Nussbaum natur	bois noyer naturel	madera nogal natural

Versioni LED / LED versions

LED A



LED B



caratteristiche / features

USA & Canada

USA & Canada

		50.000	50.000	50.000	50.000
vita media / average lifetime	ore / h	50.000	50.000	50.000	50.000
flusso luminoso / luminous flux	lm	600	600	600	600
temperatura colore / color temperature	°K	2.700	2.700	2.700	2.700
CRI	Ra	90	90	90	90
efficacia / efficiency	lm/W	120	120	120	120
angolo ottico / optical angle	°	80	80	80	80
tensione media / average tension	V	10	10	10	10
consumo / power consumption @500mA	W	5	5	5	5
dimmerazione / dimming	DIM	1-10 V / Push	1-10 V / Push	1-10 V / Push	1-10 V / Push

LED C



LED D



caratteristiche / features

USA & Canada

USA & Canada

		50.000	50.000	50.000	50.000
vita media / average lifetime	ore / h	50.000	50.000	50.000	50.000
flusso luminoso / luminous flux	lm	600	600	600	600
temperatura colore / color temperature	°K	2.700	2.700	2.700	2.700
CRI	Ra	90	90	90	90
efficacia / efficiency	lm/W	120	120	120	120
angolo ottico / optical angle	°	80	80	80	80
tensione media / average tension	V	10	10	10	10
consumo / power consumption @500mA	W	5	5	5	5
dimmerazione / dimming	DIM	1-10 V / Push	1-10 V / Push	1-10 V / Push	1-10 V / Push

LED E



LED F



caratteristiche / features

USA & Canada

USA & Canada

vita media / average lifetime	ore / h	40.000	40.000	40.000	40.000
flusso luminoso / luminous flux	lm	850	850	1.650	1.650
temperatura colore / color temperature	°K	3.000	3.000	3.000	3.000
CRI	Ra	80	80	80	80
efficacia / efficiency	lm/W	140	140	130	130
angolo ottico / optical angle	°	115	115	115	115
tensione media / average tension	V	12	12	25	25
consumo / power consumption @500mA	W	6	6	12,5	12,5
dimmerazione / dimming	DIM	1-10 V / Push	1-10 V / Push	1-10 V / Push	1-10 V / Push

LED G



LED I



caratteristiche / features

USA & Canada

USA & Canada

vita media / average lifetime	ore / h	30.000	30.000	20.000	20.000
flusso luminoso / luminous flux	lm	2.850	2.850	1.120	1.300
temperatura colore / color temperature	°K	3.000	3.000	3.000	3.000
CRI	Ra	80	80	80	80
efficacia / efficiency	lm/W	145	145	110	75
angolo ottico / optical angle	°	115	115	115	115
tensione media / average tension	V	39	39	230	120
consumo / power consumption @500mA	W	19,5	19,5	10	17,5
dimmerazione / dimming	DIM	1-10 V / Push	1-10 V / Push	Phase cut	Phase cut

Versioni LED / LED versions

LED J



LED N



caratteristiche / features

USA & Canada

USA & Canada

vita media / average lifetime	ore / h	20.000	20.000	20.000	20.000
flusso luminoso / luminous flux	lm	1.120	1.300	1.120	1.300
temperatura colore / color temperature	°K	3.000	3.000	3.000	3.000
CRI	Ra	80	80	80	80
efficacia / efficiency	lm/W	115	75	115	75
angolo ottico / optical angle	°	115	115	115	115
tensione media / average tension	V	230	120	230	120
consumo / power consumption @500mA	W	10	17,5	10	17,5
dimmerazione / dimming	DIM	Phase cut	Phase cut	Phase cut	Phase cut

LED O



LED R



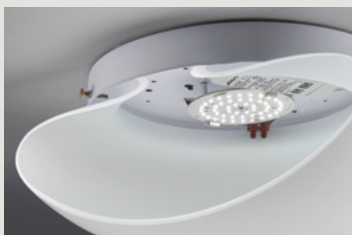
caratteristiche / features

USA & Canada

USA & Canada

vita media / average lifetime	ore / h	40.000	40.000	40.000	40.000
flusso luminoso / luminous flux	lm	2.850	2.850	1.650	1.650
temperatura colore / color temperature	°K	3.000	3.000	3.000	3.000
CRI	Ra	80	80	80	80
efficacia / efficiency	lm/W	145	145	130	130
angolo ottico / optical angle	°	115	115	115	115
tensione media / average tension	V	39	39	25	25
consumo / power consumption @500mA	W	19,5	19,5	12,5	12,5
dimmerazione / dimming	DIM	1-10 V / Push	1-10 V / Push	1-10 V / Push	1-10 V / Push

LED T



LED V



caratteristiche / features

USA & Canada

USA & Canada

vita media / average lifetime	ore / h	40.000	40.000	30.000	30.000
flusso luminoso / luminous flux	lm	1.650	1.650	2.850	2.850
temperatura colore / color temperature	°K	3.000	3.000	3.000	3.000
CRI	Ra	80	80	80	80
efficacia / efficiency	lm/W	130	130	145	145
angolo ottico / optical angle	°	115	115	115	115
tensione media / average tension	V	25	25	39	39
consumo / power consumption @500mA	W	12,5	12,5	19,5	19,5
dimmerazione / dimming	DIM	1-10 V / Push	1-10 V / Push	1-10 V / Push	1-10 V / Push

LED X



caratteristiche / features

USA & Canada

vita media / average lifetime	ore / h	40.000	40.000
flusso luminoso / luminous flux	lm	2.850	2.850
temperatura colore / color temperature	°K	3.000	3.000
CRI	Ra	80	80
efficacia / efficiency	lm/W	145	145
angolo ottico / optical angle	°	115	115
tensione media / average tension	V	39	39
consumo / power consumption @500mA	W	19,5	19,5
dimmerazione / dimming	DIM	1-10 V / Push	1-10 V / Push

Fotografia

Quasar
Studio Pointer

Fotolito

Ditre

Stampa

L'Artegrafica

Edizione n° 2 - Agosto 2019

News_2 · 2019 - rev. n° 11

© Copyright - Vetreria Vistosi s.r.l.

Proprietà artistica e letteraria
riservata in tutto il mondo.

È vietata la riproduzione, anche parziale,
dei testi e delle fotografie senza autorizzazione.



UNI EN ISO 9001 - CERTIFIED COMPANY

Vetreria Vistosi s.r.l.

Via Galileo Galilei, 9-9/A-11
31021 Mogliano Veneto - Treviso (Italy)

Tel +39 041 5903480 · +39 041 5900170

Fax +39 041 5900992 · +39 041 5904540

www.vistosi.it · vistosi@vistosi.it

