

MIRABELLE



B E R N H A R D T



MIRABELLE

B E R N H A R D T

A fresh adaptation of French Provincial furnishings, the Mirabelle collection balances traditional neoclassical forms with effortless casual style. Elements of 17th century French design are refined and softened by a gently worn whitewashed finish. Ornamental hardware and stepped molding combine with graceful curving lines, cabriole legs, antique mirrored panels and double pedestals. A black accent finish adds dramatic contrast, along with blackened metal grilles similar to forged iron. Fancy face tabletops are reminiscent of historic French parquetry, while scrollwork, faux bamboo legs and tufted upholstery provide a subtle hint of romance. Designed on a larger scale, the collection frames shape and movement with a restrained simplicity and natural warmth. Rustic finishes mingle with formal silhouettes and intricate details. Key pieces are designed with clean lines and a modern sentiment, offering the versatility of both transitional and traditional design. The look is sophisticated and dressy, but relaxed and inviting.









SHOWN:

304-132 Buffet

304-242/304-244 Rectangular Dining Table

304-542 Arm Chair

304-617/304-110 Cabinet







SHOWN:
304-914C Console Table









SHOWN:
304-032 Bachelor's Chest
304-125 Round Side Table
N2062L Pascal Chairs (*Leather 209-000*)









SHOWN:

304-011 Square Cocktail Table

304-121 End Table

304-914C Console Table

N2097 Albion Sofa (*Body Fabric 1003-000*)

212SL Palazzo Chairs (*Leather 352-002*)

N1082 Nadine Chair (*Body Fabric 1682-020*)





SHOWN:
304-032B Bachelor's Chest





SHOWN:

304-032B Bachelor's Chest

304-H09/FR09 Upholstered Panel Bed

304-506 Metal Bench (*Body Fabric B544*)







INDEX



304-242 RECTANGULAR DINING TABLE TOP
304-244 DINING TABLE BASE

Overall: W 84 (104-124) | D 44 | H 30 in.

Overall: W 213.36 (264.16-314.96) | D 111.76 | H 76.20 cm.

Two 20" leaves. Scrolled legged base with adjustable glides.
Cotton finish.
pages Inside Front Cover, 1, 4, 5, 6, 7



304-272 ROUND DINING TABLE TOP
304-273 PEDESTAL DINING TABLE BASE

Overall Diameter: 60 (80) | H 30 in.

Overall Diameter: 152.40 (203.20) | H 76.20 cm.

One 20" leaf. Cast pedestal with bottom wood base. Adjustable
glides. Cotton finish.
pages Front Cover, 2, 3, 22, 23, Back Cover



304-541 SIDE CHAIR

W 21-1/2 | D 28-1/4 | H 44-9/16 in.

W 54.61 | D 71.76 | H 113.19 cm.

Seat Height: 19 in. | 48.26 cm.

Seat Depth: 19 in. | 48.26 cm.

Fabric shown: B544

Upholstered seat, inback and outback with welt around seat. Exposed wood legs with
shaped stretchers. Cotton finish.

Also available in other fabrics excluding leathers, silks and pillow fabrics; order as 304-X41.
pages Inside Front Cover, 6, 7



304-542 ARM CHAIR

W 27-11/16 | D 28-5/8 | H 46-1/2 in.
W 70.33 | D 72.71 | H 118.11 cm.

Arm Height: 25 in. | 63.50 cm.

Seat Height: 19 in. | 48.26 cm.

Seat Depth: 19 in. | 48.26 cm.

Fabric shown: B544

Upholstered seat, inback and outback with welt around seat. Exposed wood arms and legs, shaped stretchers. Cotton finish.

Also available in other fabrics excluding leathers, silks and pillow fabrics; order as 304-X42.

pages Inside Front Cover, 1, 4, 5, 6, 7,



304-503 SIDE CHAIR

W 23-1/4 | D 27 | H 38 in.
W 59.06 | D 68.58 | H 96.52 cm.

Seat Height: 18-3/4 in. | 47.63 cm.

Seat Depth: 18-3/4 in. | 47.63 cm.

Fabric shown: B552

Upholstered chair with non-removable, slip-cover look. Heavy duty non-marring casters.

Also available in other fabrics excluding leathers, silks and pillow fabrics; order as 304-X03.

pages Front Cover, 2, 3, 22. Back Cover



304-504 ARM CHAIR

W 26-1/4 | D 27 | H 38 in.
W 66.68 | D 68.58 | H 96.52 cm.

Arm Height: 24 3/4 in. | 62.87 cm.

Seat Height: 18-3/4 in. | 47.63 cm.

Seat Depth: 18-3/4 in. | 47.63 cm.

Fabric shown: B552

Upholstered chair with non-removable, slip-cover look. Heavy duty non-marring casters.

Also available in other fabrics excluding leathers, silks and pillow fabrics; order as 304-X04.

pages Front Cover, 2, 3, 22. Back Cover



304-132 BUFFET

W 80 | D 19-1/2 | H 36-5/16 in.
W 203.20 | D 49.53 | H 92.23 cm.

Four doors with cast grille over inset antiqued mirrored glass panel. Behind end doors are two adjustable/removable shelves and bottom shelf surface. Behind paired center doors is one fixed shelf, one drawer with wrapped pad and hand cut-out, and bottom shelf surface. Adjustable glides. Anti-tip kit. Cotton finish.
page 4



304-617 CABINET DECK 304-110 CABINET BASE

Overall: W 51-13/16 | D 20 | H 91-1/2 in.
Overall: W 131.60 | D 50.80 | H 232.41 cm.

DECK: Two wood-framed doors with decorative cast grille over inset antiqued mirrored glass panels and magnetic catch. Behind doors are three adjustable/removable wood shelves and bottom shelf surface. BASE: Two doors. Behind each door is one adjustable/removable shelf and bottom shelf surface. Adjustable glides. Anti-tip kit. Cotton finish.
page 5



304-H09/FR09 UPHOLSTERED PANEL BED (KING)

Overall: W 83-1/2 | D 92-5/8 | H 71-1/16 in.
Overall: W 212.09 | D 235.27 | H 180.50 cm.

Fabric shown: B544

Slat Height: 8-3/4 in. | 22.23 cm.

Shaped wood-framed headboard and footboard with inset button-tufted upholstered panel with welt. Wood side rails. Five wood slat support system with adjustable center supports. Cotton finish. Headboard cannot be used alone. Must be ordered with footboard/side rails.

Also available in other fabrics excluding leathers, silks and pillow fabrics; order as 304-XH09/XFR9.

pages 18, 20, 21, 22, 23

Also available:

304-H07/FR07 UPHOLSTERED PANEL (QUEEN)

Overall: W 67-1/2 | D 92-5/8 | H 67-1/16 in.

Overall: W 171.45 | D 235.27 | H 170.34 cm.

Also available in other fabrics excluding leathers, silks and pillow fabrics; order as 304-XH07/XFR7.

304-H08/FR08 UPHOLSTERED PANEL (CALIFORNIA KING)

Overall: W 79-1/2 | D 96-5/8 | H 71-1/16 in.

Overall: W 201.93 | D 245.43 | H 180.50 cm.

Also available in other fabrics excluding leathers, silks and pillow fabrics; order as 304-XH08/XFR8.



304-054 DRESSER

W 76 | D 22-3/8 | H 39-1/8 in.

W 193.04 | D 56.83 | H 99.38 cm.

Curved front and ends. Nine drawers. Two wood center support legs. Adjustable glides. Anti-tip kit. Cotton finish.

Note: Dresser is bored for optional 304-331 mirror support attachment.

pages 31, Back Cover



304-032 BACHELOR'S CHEST

304-032B BACHELOR'S CHEST

W 40 | D 19 | H 32 in.

W 101.60 | D 48.26 | H 81.28 cm.

Shaped front and ends. Three drawers. Four bun feet with adjustable glides. Center wood support leg. Anti-tip kit. Cotton and Ember finishes.

pages 10, 11, 16, 18, 19, 21, 22, 23



304-230 BACHELOR'S CHEST

W 40 | D 21 | H 32 in.

W 101.60 | D 53.34 | H 81.28 cm.

Curved front and ends. Three drawers. Adjustable glides. Anti-tip kit. Cotton finish.
page 22



304-011 SQUARE COCKTAIL TABLE

W 45-1/16 | D 45-1/16 | H 19 in.

W 114.46 | D 114.46 | H 48.26 cm.

Fancy face top with four scrolled legs. Wood shelf base. Casters. Cotton finish.
pages 12, 13, 14, 15, 22



304-121 END TABLE

W 22 | D 28 | H 25 in.

W 55.88 | D 71.12 | H 63.50 cm.

Fancy face top with four scrolled legs. Shaped bottom base with open center. Adjustable glides.
Cotton finish.
pages 14, 31, Back Cover



304-125 ROUND SIDE TABLE

Diameter 30 | H 26 in.
Diameter 76.20 | H 66.04 cm.

Round top with base consisting of four shaped legs with center four-pronged metal collar in Carbon finish. Adjustable glides. Cotton finish.
pages 11, 13, 23



304-914C CONSOLE TABLE

W 80 | D 19 | H 32-1/4 in.
W 203.20 | D 48.26 | H 81.92 cm.

Double pedestal base. Each pedestal consisting of three “S” scroll shapes with bottom base. Adjustable glides. Anti-tip kit. Combination finish with top in Ember finish and base in Cotton finish.
pages 6, 8, 9, 15, 23, Inside Back Cover



304-506 METAL BENCH

W 26 | D 18 | H 21-3/4 in.
W 66.04 | D 45.72 | H 55.25 cm.

Fabric shown: B544
Upholstered seat. Solid steel “X” frame and stretchers in Carbon finish.
Also available in other fabrics excluding leathers, silks and pillow fabrics; order as 304-X06.
pages 18, 20



304-331 MIRROR

W 50 | D 2-1/4 | H 40 in.

W 127 | D 5.72 | H 101.60 cm.

Cast frame with antiqued beveled mirrored glass. Cotton finish.

Note: Due to weight, must be hung on stud. Mirror supports and instruction sheet included for attachment to 304-054 dresser. Use support only when mirror is hung in horizontal position.

Mirror depth with support: 3-1/8 in./7.94 cm.

pages 31, Back Cover





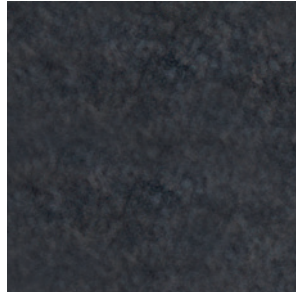
FINISHES



Cotton



Ember



Carbon

FABRICS



B544



B552

ADDITIONAL IMAGES FEATURED

COVER: 304-272/304-273 Round Pedestal Dining Table, 304-503 Side Chairs, 304-504 Arm Chairs.

INSIDE FRONT COVER: 304-242/304-244 Rectangular Dining Table, 304-542 Arm Chair, 304-541 Side Chairs.

PAGES 2-3: 304-272/304-273 Round Pedestal Dining Table, 304-503 Side Chairs, 304-504 Arm Chairs.

PAGES 6-7: 304-242/304-244 Rectangular Dining Table, 304-542 Arm Chairs, 304-541 Side Chairs, 304-914C Console Table.

PAGES 12-13: 304-011 Square Cocktail Table, 304-125 Round Side Table, N1712 Kingston Wing Chairs (*Body Fabric 1126-010*).

PAGES 20-21: 304-H09/FR09 Upholstered Panel Bed, 304-032B Bachelor's Chest, 304-506 Metal Benches (*Body Fabric B544*).

PAGES 22-23: 304-230 Bachelor's Chest, 304-H09/FR09 Upholstered Panel Bed, 304-011 Square Cocktail Table, N1082 Nadine Chair (*Body Fabric 1682-020*), N2097 Albion Sofa (*Body Fabric 1003-000*), 304-272/304-273 Round Pedestal Dining Table, 304-503 Side Chair, 304-504 Arm Chair, 304-032B Bachelor's Chest, 304-914C Console Table, 304-125 Round Side Table.

PAGE 31: 304-054 Dresser, 304-331 Mirror, 304-121 End Table, N1712 Kingston Chair (*Body Fabric 1126-010*).

INSIDE BACK COVER: 304-914C Console Table.

BACK COVER: 304-272/304-273 Round Pedestal Dining Table, 304-503 Side Chair, 304-504 Arm Chair, 304-054 Dresser, 304-331 Mirror, 304-121 End Table, N1712 Kingston Chair (*Body Fabric 1126-010*), N1082 Nadine Chair (*Body Fabric 1682-020*).



Many high quality, natural materials, such as wood, veneer, glass, rubber, metal, plastic, cloth and/or stone, are used in our products and may reflect grain, vein or color variations. These variations are inherent in their species and enhance the unique beauty of each piece of furniture. Due to the photographic and printing processes used in the creation of this catalog, the finish and fabric colors displayed may vary from actual finish and fabric colors. Authorized Bernhardt retailers carry a variety of our furniture pieces and collections, so please contact them about the specific products at their location. Bernhardt uses materials and resources sourced globally to ensure a quality product. Specifications subject to change without notice. Copyright © 2020 Bernhardt Furniture Company. Printed in the USA 03/2020 GVS 4.8K.



