


LUM by Estefania Johnson



*3 | LUM: WALL REVETMENT + LIGHT
4 | ANCHOR & ASSEMBLY SYSTEM
5 | REVETMENT DIFFERENT SHAPES
7 | LUM SINGLE PANEL
9 | COPPER FINISHES
10 | ANTIMICROBIAL COPPER CU+
11 | ENVIRONMENT*



1



2



3

LUM

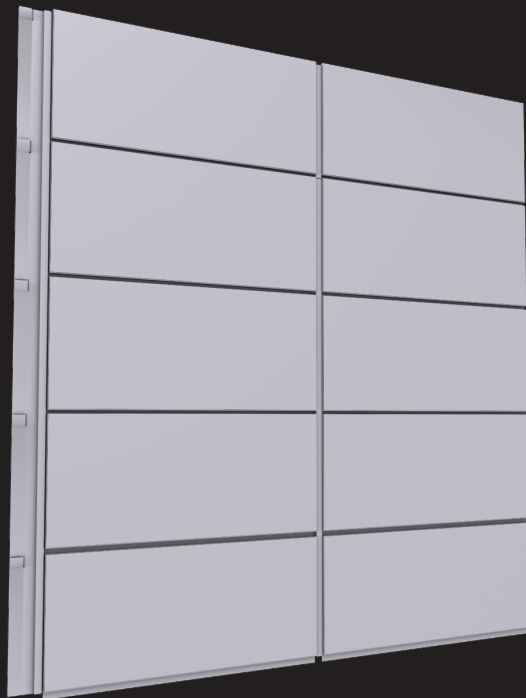
COPPER REVETMENT + LIGHTING

Copper revetment that consists in illuminate panels of copper, which combined with basic copper panels, makes possible to create different design configurations, according to aesthetic and illumination need of each room.



ANCHOR AND ASSEMBLY SYSTEM

The light and basic modules have the same assembly system based on clips that allow to easily assembly and dismantle.



MEASUREMENT

41,8 x 18,7 x 1,6 cm

METER APROXIMATED

93,5 x 83,4 cm

It includes 10 basic panels

CAPACITY

12,7 modules by m²



1/ Revetment in different shapes.



2/ Access hall, CVV office. 5420 Cerro el Plomo, floor 10, Santiago, Chile detail



Exhibition "Copper, Light and Energy" from Colina Prison. Codelco Head Office Gallery. From June 23 to July 15, 2011.

LUM SINGLE PANEL

MAKING SMALLER APPLICATIONS EASIER

Built with same components as the revetment, they are laid over a metallic base and are connected with each other. The Single Panel is very easy to install, just plug it in and hang it on the wall. As simple as hanging a painting

LUM Single Panel is available in different shapes, sizes and colors.





1| Single Panel NAT Lum 167,2 x 75,2 cm



COPPER FINISHED PANELS



ANTIMICROBIAL COPPER CU+

The revetment is made of antimicrobial copper (EPA registered) inhibits the buildup and growth of bacteria, killing 99.9% of bacteria within two hours of exposure. Therefore LUM allows have a wall free of Virus, fungus and bacterium. A wall sanitized.



ENVIRONMENT

*LUM uses electrolytic copper sheets,
saving energy in their production.*

Likewise, copper is 100% recyclable.



COPPER + DESIGN + LIGHT

QUASAR HOLLAND

DESIGNED BY ESTEFANIA JOHNSON / QSTUDIO

WWW.QUASAR.NL / INFO@QUASAR.NL