



RELEASE 09.20

BLACK & WHITE

CICLOITALIA FLEX - FROM PAGE 4

U. - FROM PAGE 20

VI. - FROM PAGE 34



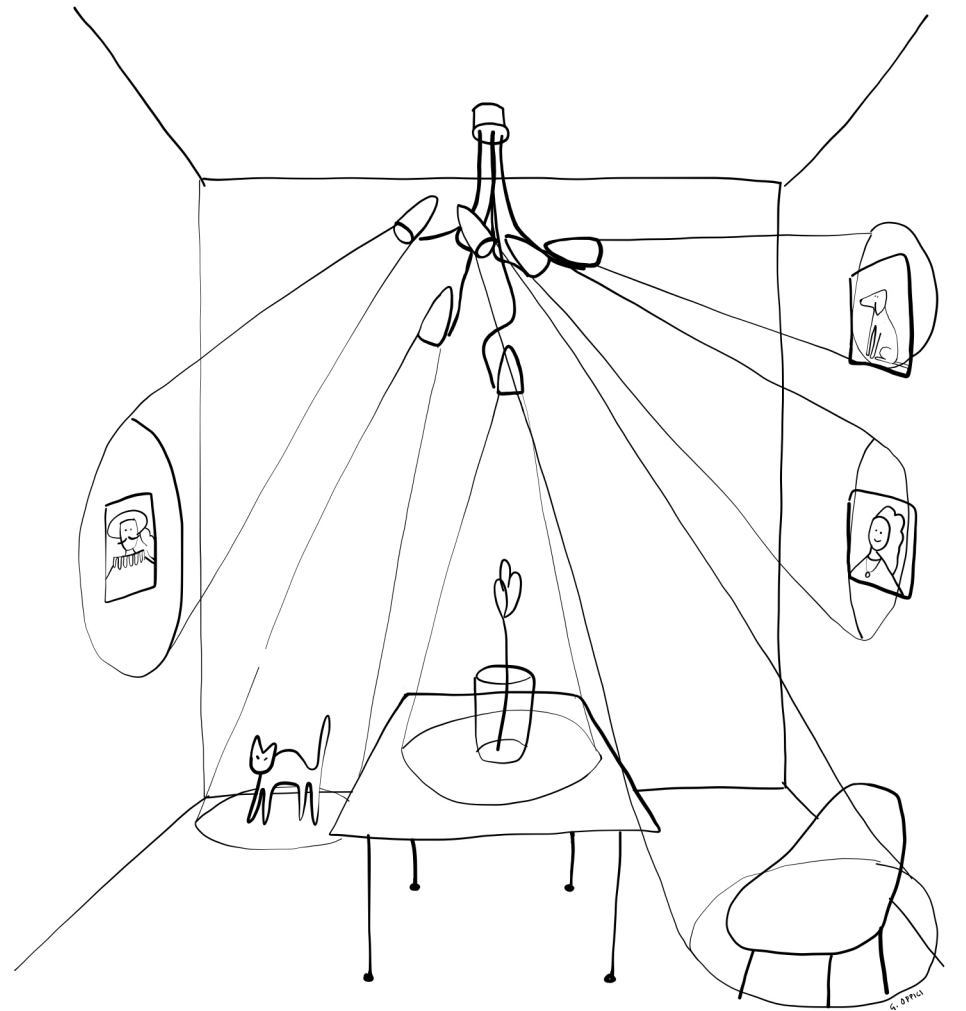


CicloItalia Flex





SPEED, STYLE, AND REF





CicloItalia Flex C6

Ceiling lamp
Materials and colours: black or white metal base and spotlights, brass flex and details, glass lens
Light source: 6x GU5.3 LED bulb

80/120 cm
variable



CicloItalia Flex W1

Wall lamp

Materials and colours: black or white metal base and spotlight, brass flex and details, glass lens
Light source: 1x GU5.3 LED bulb

30/50 cm
variable



CicloItalia Flex W2

Wall lamp

Materials and colours: white or black metal base and spotlights, brass flex and details, glass lens
Light source: 2x GU5.3 LED bulb



40/70 cm
variable



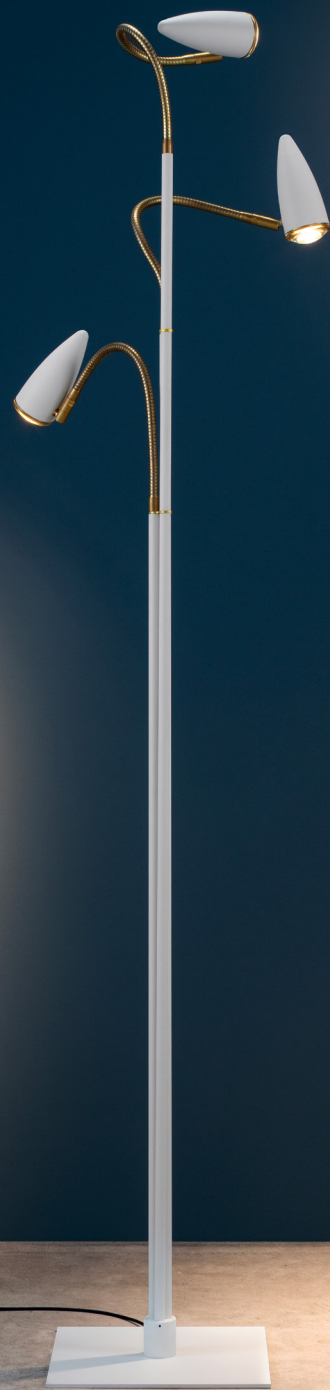


CicloItalia Flex F3

Standing lamp

Materials and colours: white or black metal structure and spotlights, brass flex and details, glass lens
Light source: 3x GU5.3 LED bulb

170/190 cm
variable





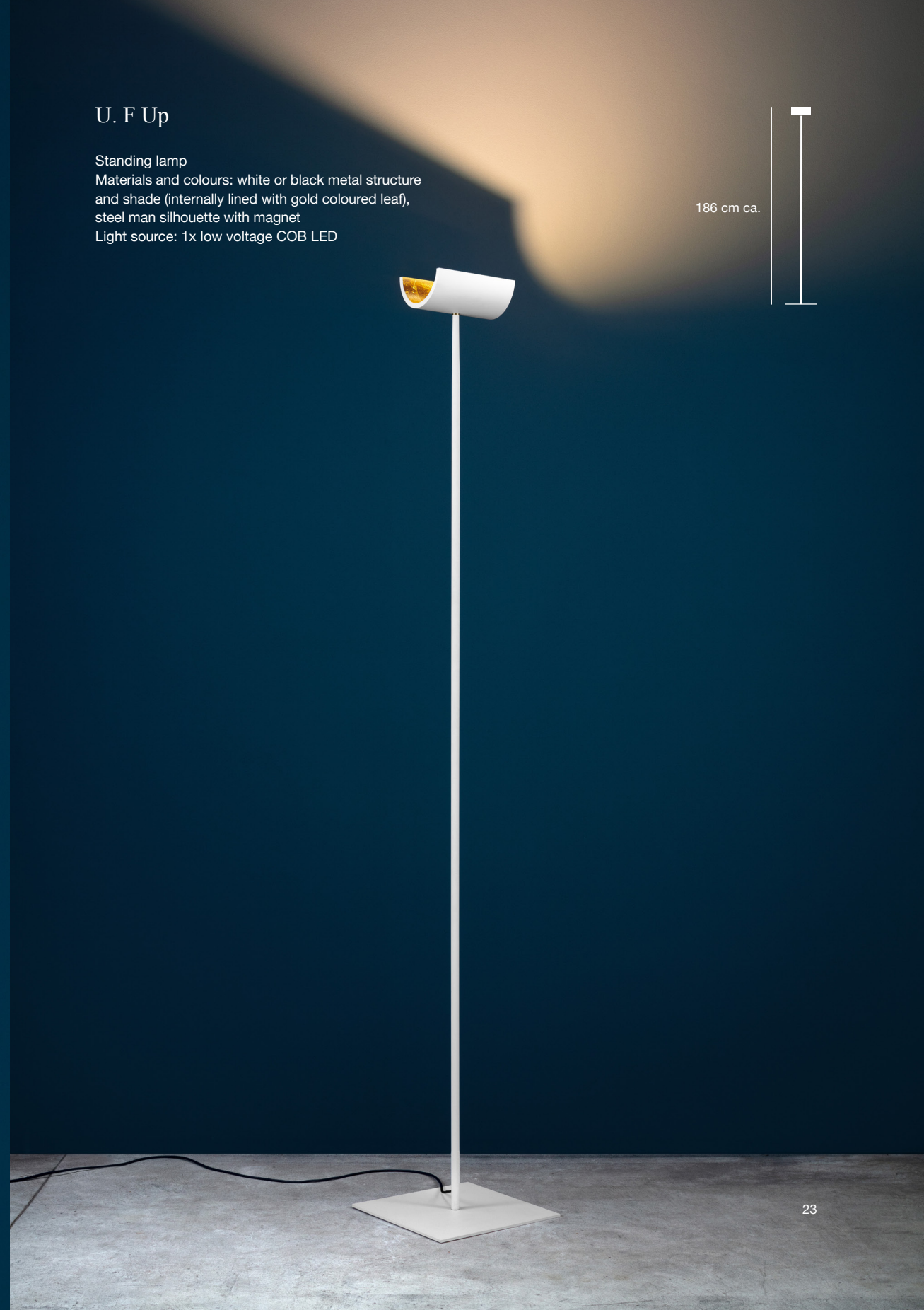
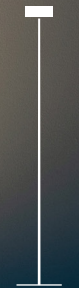
U.



U. F Up

Standing lamp
Materials and colours: white or black metal structure
and shade (internally lined with gold coloured leaf),
steel man silhouette with magnet
Light source: 1x low voltage COB LED

186 cm ca.







U. W

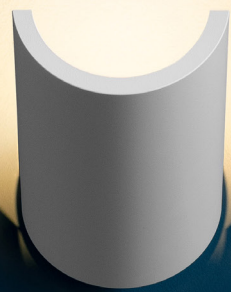
Wall lamp

Materials and colours: black or white
metal base and shade, brass joint

Light source: 1x low voltage COB LED



min 13 cm
max 23 cm ca.



U. F Flex

Standing lamp
Materials and colours: black or white
metal structure and shade, brass flex
Light source: 1x low voltage COB LED

160/170 cm
variable



U. W Flex

Wall lamp

Materials and colours: black or white
metal base and shade, brass flex

Light source: 1x low voltage COB LED

35/55 cm
variable





Vi.



Vi. F

Standing lamp

Materials and colours: black or white metal
structure and shade, brass details

Light source: 1x low voltage COB LED

189 cm ca.





The Vi. semi-cylindrical shade with LED has an innovative magnetic and mechanical mounting system: respecting the polarities, you can easily position it between the structural rods and rotate it to direct the light as you prefer.





Vi. W

Wall lamp

Materials and colours: black or white
metal base and shade, brass details

Light source: 1x low voltage COB LED

53 cm



25 cm





Don't forget Bergamo

Concept: themagenzia.it
Photos: Nava Rapacchietta, G. Borrelli
Render: Truetopia

Catellani & Smith

Offices
via Cimitero 1/A
I-24020 Villa di Serio, BG
T. +39 035 656088
info@catellanismith.com

Show-room
T. +39 035 210193
show-room@catellanismith.com

www.catellanismith.com


Catellani & Smith


Catellani & Smith

