

CRITERIA



B E R N H A R D T



CRITERIA

B E R N H A R D T

While glamorous furniture collections can often be bold, the best ones are tempered by delicate details that bestow living spaces with the perfect balance. Transitional in design but traditional in nature, Criteria delivers a luxurious look without sacrificing modern sensibilities. Criteria is a collection full of surprises, which starts with the signature high-sheen finishes found on ash solids and veneers. The Heather Gray and Pale Ivory finishes are set off by stainless steel inlays that lend a glimmering detail to the tops and fronts of many of the case pieces. Another twist comes in the form of faux lizard skin patterns in gray and ivory. These elements all work beautifully together and offer a contemporary flair. A Radiant Nickel finish on metal is alluring, while solid brass, nickel plated hardware in a silver tone is formed into unique geometric shapes as intricate as fine jewelry. Sheraton influences are evident in some forms, and overall pieces have a contemporary, cleaner and feminine appeal. Criteria exudes sleekness and refinement, and sets the benchmark for glamorous transitional collections even higher.





BALANCED

With its rare blend of modern touches and traditional forms, Criteria achieves a graceful harmony. This subtle balancing act is also evident in the collection's Pale Ivory and Heather Gray finishes, which lend a modern color palette.



SHOWN:

363-011W Square Cocktail Table
363-121W End Table
363-125W Round End Table
363-126W Round End Table

363-401 Metal Bar Cart
363-910G Console Table
363-840W Bar Cabinet
363-813 Upholstered Screen

N6802 Meredith Chairs
N8477 Baldwin Sofa

DELICATE

As with most Bernhardt collections, Criteria's design details surprise and delight. Finely crafted pieces add architectural elements to rooms, while perfectly proportioned forms contribute to a feminine feel.



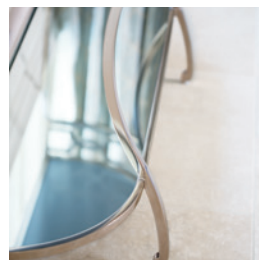
SHOWN:
363-015W Round Cocktail Table
363-401 Metal Bar Cart
363-812W Metal Bookcases
N9000L Roscoe Ottoman
B1411 Lancaster Chair
N1527L Clinton Sofas





LUXURIOUS

Have you been striving to create a sophisticated style for your living spaces? By combining modern lines with a classic approach, Criteria is the kind of collection that makes looking sophisticated shockingly easy.



SHOWN:
363-015W Round Cocktail Table
363-812W Metal Bookcases
363-912 Metal Console Table
N1527L Clinton Sofas

REFINED

Whether at work or at play, Criteria's exquisite sense of elegance keeps things classy.

However, for all its polish the collection never loses sight of what's most important:

keeping you comfortable, no matter your endeavor.



SHOWN:

- 363-555G Side Chair
- 363-556G Arm Chair
- 363-356C Display Cabinet
- 363-512G Leather Desk

- 363-860G Entertainment Console
- 363-813 Upholstered Screen
- N3003 Selby Chair

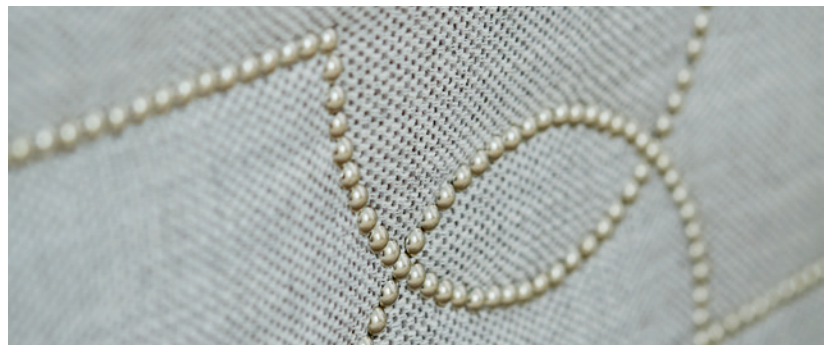






GLAMOROUS

Simple forms plus sumptuous surfaces combine to offer serious glamour. 21st century modern furniture with simplified classic forms is rendered luxurious by new multidimensional surfaces. All designed to bring beauty and emotion to interiors.



SHOWN:

363-H36/FR36 Upholstered Bed
363-052G Dresser
363-118G Drawer Chest

363-217G Nightstand
363-126W Round End Table
N1084 Nadine Chaise





RADIANT

High sheen, contemporary wood finishes pair well with glittering stainless steel inlays, a Radiant Nickel finish on metal and bright silver hardware. Much like jewelry, these shimmering touches of brilliance only enhance Criteria's luminous look.



SHOWN:

363-H06/F06/R06 Metal Upholstered Panel Bed
363-051G Dresser
363-118G Drawer Chest

363-214G Nightstand
363-333G Round Mirror
363-508 Metal Bench





VERSATILE

One of the Criteria collection's greatest strengths is its remarkable flexibility. Pieces are as beautiful as they are functional, and they can be mixed and matched to provide a unique look for any home.



SHOWN:
363-547G Arm Chairs
363-131G Sideboard
363-132G Buffet
363-331G Mirror





INDEX



363-242G DINING TABLE TOP
363-244G PEDESTAL DINING TABLE BASE

Overall: W 86 (108) | D 44 | H 30 in.
 Overall: W 218.44 (274.32) | D 111.76 | H 76.20 cm.

Ash solids and quartered ash veneers. Fancy face top with stainless steel metal inlay. One fancy face 22" leaf with stainless steel metal inlay. Adjustable glides. Heather Gray finish.

Note: Base ships as a pair.
pages 16, 17



363-271G ROUND DINING TABLE TOP
363-273G PEDESTAL DINING TABLE BASE

Overall Diameter: 60 | H 30 in.
 Overall Diameter: 152.40 | H 76.20 cm.

Ash solids and quartered ash veneers. Fancy face top with stainless steel metal inlay. Cast pedestal with embossed leather pattern. Wood base. Adjustable glides. Heather Gray finish.

pages Front Cover, 20, 21, Back Cover



363-541G SIDE CHAIR

W 21-1/2 | D 26-3/4 | H 39 in.
 W 54.61 | D 67.95 | H 99.06 cm.

Seat Height: 19 in. | 48.26 cm.
 Seat Depth: 19-1/8 in. | 48.58 cm.

Assigned fabric: B420

Upholstered seat and inback with welt. Upholstered outback with exposed wood splat. No leather option. Heather Gray finish.

Also available in other fabrics; order as 363-X41G.



363-542G ARM CHAIR

W 23-1/2 | D 26-3/4 | H 39 in.
 W 59.69 | D 67.95 | H 99.06 cm.

Arm Height: 25-1/2 in. | 64.77 cm.
 Seat Height: 19 in. | 48.26 in.
 Seat Depth: 19-1/8 in. | 48.58 cm.
Assigned fabric: B420
 Upholstered seat and inback with welt. Upholstered outback with exposed wood splat. No leather option. Heather Gray finish.
Also available in other fabrics; order as 363-X42G.
pages Front Cover, 20, 21, Back Cover



363-555G SIDE CHAIR

W 21 | D 26-3/8 | H 39-1/2 in.
 W 53.34 | D 66.99 | H 100.33 cm.

Seat Height: 19 in. | 48.26 cm.
 Seat Depth: 19-3/4 in. | 50.17 cm.
Assigned fabric: B428
 Upholstered seat with welt. Wood splat back. No leather option. Heather Gray finish.
Also available in other fabrics; order as 363-X55G.
pages 9, 16, 17



363-556G ARM CHAIR

W 24 | D 26-3/8 | H 39-1/2 in.
 W 60.96 | D 66.99 | H 100.33 cm.

Arm Height: 25-1/2 in. | 64.77 cm.
 Seat Height: 19 in. | 48.26 cm.
 Seat Depth: 19-3/4 in. | 50.17 cm.
Assigned fabric: B428
 Upholstered seat with welt. Wood splat back. No leather option. Heather Gray finish.
Also available in other fabrics; order as 363-X56G.
pages 8, 16, 17



363-547G ARM CHAIR

W 23-5/8 | D 26-1/4 | H 38-1/4 in.
 W 60.01 | D 66.68 | H 97.16 cm.

Arm Height: 19-3/4 in. | 50.17 cm.
 Seat Height: 19 in. | 48.26 cm.
 Seat Depth: 19 in. | 48.26 cm.
Assigned fabric: B428
 Upholstered seat, inback, outback, inarms, and outarms with welt. No leather option. Heather Gray finish.
Also available in other fabrics; order as 363-X47G.
pages 19, 21



363-131G SIDEBOARD

W 78 | D 21 | W 38 in.
 W 198.12 | D 53.34 | W 96.52 cm.

Ash solids and quartered ash veneers. Stainless steel metal inlay on top. Four fancy face doors. Behind end doors is one adjustable/removable shelf. Behind center pair of doors is one drawer with cut-out hand pull and silverware insert, and one adjustable shelf. Adjustable glides. Anti-tip kit. Heather Gray finish.
pages 18, 19, 21, Back Cover



363-132G BUFFET

W 70-1/2 | D 20 | W 36 in.
 W 179.07 | D 50.80 | W 91.44 cm.

Ash solids and quartered ash veneers. Stainless steel metal inlay on top. Three fancy face doors with stainless steel metal inlay around door face. Behind LSF door is one drawer with wrapped pad and one adjustable/removable shelf. Behind RSF is one drawer with silverware insert and one adjustable/removable shelf. Behind center door are two adjustable/removable shelves and one covered grommet hole in back panel. Adjustable glides. Anti-tip kit. Heather Gray finish.
pages 17, 18



363-356C DISPLAY CABINET

W 46 | D 19 | H 84 in.

W 116.84 | D 48.26 | H 213.36 cm.

Ash solids and quartered ash veneers. Two doors with tempered, non-beveled inset glass. Behind each door are four adjustable/removable, tempered glass shelves with polished edge and plate groove. Wood interior in Pale Ivory finish. Two halogen lights with dimmer switch. Center support leg. Weighted base for added stability. Adjustable glides. Anti-tip kit. All exterior wood surfaces in Heather Gray finish. Steel frame in Radiant Nickel finish.
pages Front Cover, 9, 16, 20, Back Cover



**363-H06/F06/R06
METAL UPHOLSTERED PANEL BED 6/6 (KING)**

Overall: H 80-1/4 | D 86-1/2 | H 68 in.
Overall: H 203.84 | D 219.71 | 172.72 cm.

Assigned fabric: B433

Slat Height: 7-5/8 in. | 19.37 cm.

Metal headboard and footboard frame in Radiant Nickel finish with inset upholstered panel. Upholstered side rails. Black cambric on back of headboard. No leather option. Three slat system with adjustable center supports. *Headboard cannot be used alone.* Also available in other fabrics; order as 363-XH06/XF06/XR06. pages 14, 15

Also Available:

363-H04/F04/R04 METAL UPHOLSTERED PANEL BED 5/0 (QUEEN)

Overall: W 64-1/4 | D 86-1/2 | H 64 in.
Overall: W 163.20 | D 219.71 | H 162.56 cm.

Also available in other fabrics; order as 363-XH04/XF04/XR04.

363-H05/F05/R05 METAL UPHOLSTERED PANEL BED 6/0 (CALIFORNIA KING)

Overall: W 76-1/4 | D 90-1/2 | H 68 in.
Overall: W 193.68 | D 229.87 | H 172.27 cm.

Also available in other fabrics; order as 363-XH05/XF05/XR05.

**363-H36/FR36
UPHOLSTERED BED 6/6 (KING)**

Overall: W 89-1/2 | D 92-1/2 | H 66 in.
Overall: W 227.33 | D 234.95 | H 167.64 cm.

Assigned fabric: B428

Slat Height: 8 in. | 20.32 cm.

Upholstered headboard with welt and nailhead trim. Upholstered footboard and rails with welt and decorative nailhead pattern. No leather option. Three slat system with adjustable center supports. Heather Gray finish. *Headboard cannot be used alone.* Also available in other fabrics and/or nailhead; order as 363-XH36/XFR6. pages 10, 11, 12, 13

363-H34/FR34 UPHOLSTERED BED (QUEEN)

Overall: W 73-1/2 | D 92-1/2 | H 64 in.
Overall: W 186.69 | D 234.95 | H 162.56 cm.

Also available in other fabrics and/or nailhead; order as 363-XH34/XFR4.

Also Available:

363-H35/FR35 UPHOLSTERED BED 6/0 (CALIFORNIA KING)

Overall: W 85-1/2 | D 96-1/2 | H 66 in.
Overall: W 217.17 | D 245.11 | H 167.64 cm.

Also available in other fabrics and/or nailhead; order as 363-XH35/XFR5.



363-051G DRESSER

W 68 | D 20-1/8 | H 36 in.

W 172.72 | D 51.12 | H 91.44 cm.

Ash solids and quartered ash veneers. Seven drawers. Stainless steel metal inlay on top and drawer fronts. Center support leg. Adjustable glides.

Anti-tip kit. Heather Gray finish.

page 15

**363-052G DRESSER**

W 68 | D 20-1/8 | H 39 in.

W 172.72 | D 51.12 | H 99.06 cm.

Ash solids and quartered ash veneers. Twelve drawers. Stainless steel metal inlay on top and drawer fronts. Center support leg. Adjustable glides.

Anti-tip kit. Heather Gray finish.

page 10

**363-118G DRAWER CHEST**

W 48-1/2 | D 19 | H 50 in.

W 123.19 | D 48.26 | H 127.00 cm.

Ash solids and quartered ash veneers. Stainless steel metal inlay on top and drawers fronts. Five drawers. Top two drawers have drop fronts and cut-out in drawer back. Corresponding grommet hole in back panel for wire management. Solid and tubular steel base and stretcher in Radiant Nickel finish. Adjustable glides. Anti-tip kit. Heather Gray finish.

pages 12, 15



363-214G NIGHTSTAND

W 30 | D 20-1/8 | H 30 in.
W 76.20 | D 51.12 | H 76.20 cm.

Ash solids and quartered ash veneers. Three drawers. Stainless steel metal inlay on top and drawer fronts. Inset leather drawer knobs in Heather Gray finish on second and third drawer. Adjustable glides. Anti-tip kit. Heather Gray finish.
page 14



363-217G NIGHTSTAND

W 30-3/8 | D 20-3/8 | H 30 in.
W 77.15 | D 51.75 | H 76.20 cm.

Ash solids and quartered ash veneers. One drawer. Solid and tubular steel base and stretchers in Radiant Nickel finish. Adjustable glides. Anti-tip kit. Heather Gray finish.
pages 10, 12, 13



363-230G BACHELOR'S CHEST

W 38 | D 19-1/8 | H 32 in.
W 96.52 | D 48.58 | H 81.28 cm.

Ash solids and quartered ash veneers. Four drawers. Stainless steel metal inlay on top and drawer fronts. Inset leather drawer knobs in Heather Gray finish on second, third and fourth drawer. Adjustable glides. Anti-tip kit. Heather Gray finish.
page 11



363-011W SQUARE COCKTAIL TABLE

W 42 | D 42 | H 18 in.

W 106.68 | D 106.68 | H 45.72 cm.

Bonded leather top in Pale Ivory finish. Solid and tubular steel base with “X” shaped stretchers in Radiant Nickel finish. Adjustable glides.

pages Inside Front Cover, 2

**363-015W ROUND COCKTAIL TABLE**

Diameter 44 | H 18 in.

Diameter 111.76 | H 45.72 cm.

Ash solids and quartered ash veneers. Stainless steel metal inlay on top. One shaped wood shelf. Metal ferrules. Adjustable glides. Pale Ivory finish.

pages 4, 5, 6

**363-121W END TABLE**

W 24 | D 28 | H 26 in.

W 60.96 | D 71.12 | H 66.04 cm.

Bonded leather drawer box. Solid and tubular steel base with “X” shaped stretchers in Radiant Nickel finish. Adjustable glides. Pale Ivory finish.

pages 3, Inside Back Cover



363-125W ROUND END TABLE

Diameter 26 | H 26 in.
Diameter 66.04 | H 66.04 cm.

Bonded leather top. Solid and tubular steel base and “X” stretcher in Radiant Nickel finish. Adjustable glides. Pale Ivory finish.
pages Inside Front Cover, 1, 2



363-126W ROUND END TABLE

Diameter 24 | H 24 in.
Diameter 60.96 | H 60.96 cm.

Ash solids and quartered ash veneers. Stainless steel metal inlay on top. One shelf. Metal ferrules. Adjustable glides. Pale Ivory finish.
pages 2, 3, 12



363-401 METAL BAR CART

W 36-5/8 | D 19-1/8 | H 35 in.
W 93.03 | D 48.58 | H 88.90 cm.

Solid and tubular steel cart in Radiant Nickel finish with inset mirrored glass top and shelf. Swivel casters.
pages 3, 4, 5, Back Inside Cover



363-910G CONSOLE TABLE

W 78 | D 16 | H 35-3/4 in.

W 198.12 | D 40.64 | H 90.81 cm.

Ash solids and quartered ash veneers. Three drawers. Stainless steel metal inlay on top, ends and drawer fronts. Stretchers. Adjustable glides. Anti-tip kit. Heather Gray finish.

pages Inside Front Cover, 1, 2, 35

**363-912 METAL CONSOLE TABLE**

W 56 | D 16 | H 34 in.

W 142.24 | D 40.64 | H 86.36 cm.

Solid and tubular steel table in Radiant Nickel finish. Inset non-beveled, mirrored glass top and shelf. Adjustable glides. Anti-tip kit.

pages 7, 16

**363-508 METAL BENCH**

W 55-7/8 | D 19 | H 19 in.

W 141.92 | D 48.26 | H 48.26 cm.

Assigned fabric: B428

Upholstered slip seat with welt. Tubular steel base with stretchers in Radiant Nickel finish. No leather option.

Also available in other fabrics; order as: 363-X08.

pages 14, 15



363-321 METAL MIRROR

W 48 | D 1-1/2 | H 36 in.

W 121.92 | D 3.81 | H 91.44 cm.

Open fretwork frame of solid and tubular steel in Radiant Nickel finish with beveled mirrored glass. Can be hung vertically or horizontally.

Note: Due to weight, must be hung on stud.

page 10



363-331G MIRROR

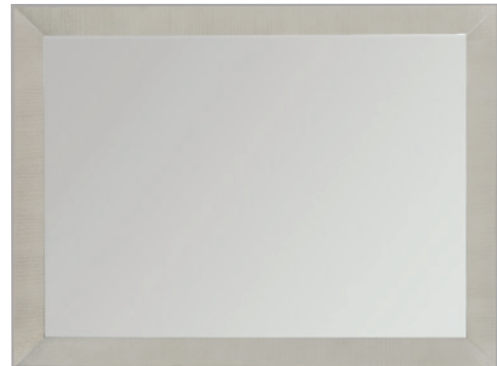
W 48 | D 1-1/2 | H 36 in.

W 121.92 | D 3.81 | H 91.44 cm.

Quartered ash veneer frame in Heather Gray finish with beveled mirrored glass. Stainless steel band on outer edge of frame. Can be hung vertically or horizontally.

Note: Due to weight, must be hung on stud.

pages 17, 18



363-333G ROUND MIRROR

W 40 | D 1-1/2 | H 40 in.

W 101.60 | D 3.81 | H 101.60 cm.

Solid ash frame in Heather Gray finish with decorative outer border of inset pieces of mirrored glass. Center non-beveled mirror glass.

Note: Due to weight, must be hung on stud.

page 15



363-512G LEATHER DESK

W 56 | D 30 | H 30-1/8 in.
 W 142.24 | D 76.20 | H 76.52 cm.

Bonded leather covered surfaces in Heather Gray finish. Lay-on tempered glass top. One drawer. Metal ferrules. Adjustable glides.
pages 8, 9



363-840W BAR CABINET

W 36 | D 21 | H 54 in.
 W 91.44 | D 53.34 | H 137.16 cm.

Ash solids with quartered ash veneers. Stainless steel metal inlay on top and door fronts. On back of doors are two shelves - each with a metal containment bar in Radiant Nickel finish. BEHIND DOORS/Upper Section: Stemware racks which can hold up to 18 stems, one fixed shelf surface with protective top coat and mirrored glass back panel. BEHIND DOORS/Lower Section: One center fixed partition. Left compartment has one full extension drawer with wrapped pad and one adjustable/removable shelf. Right compartment has one pull-out shelf with protective top coat and three wine storage racks. Back wine bottle back rests are removable. Stretchers. Adjustable glides. Anti-tip kit. Pale Ivory finish.
page 3



363-860G ENTERTAINMENT CONSOLE

W 68-1/4 | D 20 | H 34 in.
 W 173.36 | D 50.80 | H 86.36 cm.

TV Area (inside of metal inlay on top - metal inlay is raised up):

W 63 | H 15 in.
 W 160.02 | D 38.10 cm.

Ash solids and quartered ash veneers. Stainless steel metal inlay on top. Three doors with stainless steel metal inlay on fronts and around doors. Behind two left end doors are two drawers with hand pull, two open compartments with ventilation holes and two grommet holes in back panel. Behind right door are two adjustable/removable, vented shelves with ventilation holes and one grommet hole in back panel. Adjustable glides. Anti-tip kit. Heather Gray finish.

page 8



363-813 UPHOLSTERED SCREEN

W 68-5/8 | D 1-1/2 | H 91 in.
W 174.31 | D 3.81 | H 231.14 cm.

Assigned fabric: B428

Three folding upholstered panels with decorative nailhead trim pattern on front side only. No fabric, leather or nailhead options. Adjustable glides.

pages 3, 8



363-812W METAL BOOKCASE

W 46 | D 18 | H 82 in.
W 116.84 | D 45.72 | H 208.28 cm.

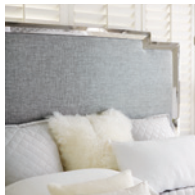
Open frame of solid and tubular steel in Radiant Nickel finish. Upper section has tempered glass top and two inset tempered glass shelves. One drawer box consisting of two drawers, covered in bonded leather with Pale Ivory finish. Lower section has one drawer box consisting of two drawers, covered in bonded leather in Pale Ivory finish. Both drawer boxes are set within the metal frame. Adjustable glides. Anti-tip kit.

pages 5, 6, 7





SIGNATURE ELEMENTS



INSPIRATION

A glamorous transitional collection, Criteria exudes sleekness and refinement through its updated forms, shimmering surfaces and unique accents. And like a good wardrobe, pieces are versatile enough to be mixed and matched.



ARTISTRY

Criteria delivers architectural details and visual interest to any home through the use of high sheen surfaces, glittering metals, decorative details and textural fabrics and leathers. Overall, pieces are nicely proportioned and have feminine feel.



ACCENTS

Faux lizard skin patterns embossed in leather come in gray and ivory finishes. Stainless steel inlays are jewelry-like while metal accents possess a shimmering Radiant Nickel finish adding to the group's refined look.



HARDWARE

Inspired by jewelry, the solid brass, nickel plated hardware comes in a bright silver tone. Intricate forms like pierced pulls in unique geometric shapes and knobs with inset embossed leather add the finishing touch.

FABRICS

Soft color tones and tactile weaves create interest in the fabrics of this collection. A pale ivory fabric creates a restful mood. While a complimentary soft, blue fabric pairs beautifully with the woods and metals of the collection. And a textural, blue-gray fabric adds richness.



B420



B428



B433

UPHOLSTERY FABRICS FEATURED

N6802 Meredith Chairs
Leather No. 141-034
pages *Inside Front Cover*, 2

B1411 Lancaster Chair
Fabric No. 2106-110
page 5

N1084 Nadine Chaise
Fabric No. 1970-040
page 12

N8477 Baldwin Sofa
Fabric No. 2981-002
pages *Inside Front Cover*, 2

N1527L Clinton Sofas
Leather No. 206-000
pages 5, 6

B2202 Callie Chairs
Fabric No. 2953-044
page *Inside Back Cover*

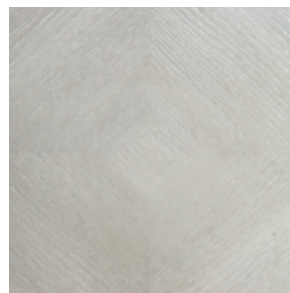
N9000L Roscoe Ottoman
Leather No. 174-211
pages 4, 5, 35

N3003 Selby Chair
Fabric No. 2628-421
page 9

B3001 Hawthorne Ottoman
Fabric No. B982-044
page *Inside Back Cover*

WOOD & FINISH

Heather Gray and Pale Ivory finishes on ash solids and veneers provide a high sheen that looks sleek and refined while the faux lizard skin pattern on embossed leather mirrors the gray and white tones used for the wood.



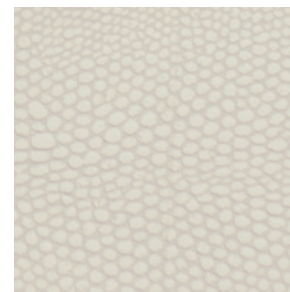
Heather Gray



Pale Ivory



Heather Gray
Embossed Leather



Pale Ivory
Embossed Leather

ADDITIONAL IMAGES FEATURED

COVER: 363-271G/363-273G Round Dining Table, 363-542G Arm Chairs, 363-131G Sideboard and 363-356C Display Cabinet.

INSIDE FRONT COVER: 363-011W Square Cocktail Table, 363-125W Round End Table, 363-910G Console Table, N6802 Meredith Chairs, and N8477 Baldwin Sofa.

PAGES 10-11: 363-H36/FR36 Upholstered Bed, 363-052G Dresser, 363-214G Nightstand, 363-230G Bachelor's Chest and 363-321 Metal Mirror.

PAGES 16-17: 363-242G/363-244G Dining Table, 363-555G Side Chairs, 363-556G Arm Chairs, 363-132G Buffet, 363-356C Display Cabinet, 363-912 Metal Console Table and 363-331G Mirror.

PAGES 20-21: 363-271G/363-273G Round Dining Table, 363-542G Arm Chairs, 363-547G Arm Chair, 363-131G Sideboard and 363-356C Display Cabinet.

PAGE 35: 363-910G Console Table and N9000L Roscoe Ottoman.

INSIDE BACK COVER: 363-121W End Table, 363-401 Metal Bar Cart, B2202 Callie Chairs and B3001 Hawthorne Ottoman.



Many high quality, natural materials, such as wood, veneer, glass, rubber, metal, plastic, cloth and/or stone, are used in our products and may reflect grain, vein or color variations. These variations are inherent in their species and enhance the unique beauty of each piece of furniture. Due to the photographic and printing processes used in the creation of this catalog, the finish and fabric colors displayed may vary from actual finish and fabric colors. Authorized Bernhardt retailers carry a variety of our furniture pieces and collections, so please contact them about the specific products at their location. Bernhardt uses materials and resources sourced globally to ensure a quality product. Specifications subject to change without notice.

Copyright © 2015 Bernhardt Furniture Company. Printed in the USA 09/2015 GVS 4.8K.



